



2020 Impact Report






Contents

- 3** A Message from Our President
- 4** Who We Are
- 6** Part of the HCA Healthcare Family
- 8** Caring for Our Community
- 18** Doing What's Right for Patients
- 28** Excellent People Make Excellence Happen
- 38** Our Hospitals

Data used in this report is from 1/1/2019-12/31/2019.



**Above all else, we
are committed
to the care and
improvement of
human life.**

A Message from Our President

As members of the healthcare community, taking care of others is what we do best. And for nearly two decades, HCA Midwest Health has delivered patient care with dignity, compassion and excellence to the communities we serve throughout the Greater Kansas City region.

We are proud of our status as the region's leading healthcare provider and one of the area's largest employers. With that comes the privilege of being able to positively impact so many lives, and it is a responsibility that we do not take lightly.

We continue to invest in new technology, expand our facilities, add new locations and services, and recruit the very best physician and clinical talent. We are focused on developing new technologies and programs that positively impact our patients' healthcare experience. And we strive to provide culturally competent care and foster an inclusive environment for all.

At HCA Midwest Health, we are driven to serve. Every day throughout our hospitals, physician practices, urgent care centers and ambulatory surgery centers, we see the very best in our people as they work with the common purpose of doing the right thing for others and staying true to our Mission: *Above all else, we are committed to the care and improvement of human life.*

The HCA Midwest Health team cares like family because we are not just caregivers. We are your neighbors. Many of us live and work in the same communities and neighborhoods as our patients. And we want exactly what our patients want: healthier communities that lead to healthier tomorrows.

It is an honor to be part of an organization that leads by example, whether that comes in the form of the nearly \$1 million in charitable contributions or \$147.7 million for charity and uncompensated care we provide or the \$116.7 million in taxes we pay, which may go to the improvement of schools, roads and infrastructure. We are dedicated to making the economies of the communities we serve stronger, and we strongly believe that there are many ways to champion health.

Throughout these pages, you will see how HCA Midwest Health is working hard to create a better tomorrow for everyone throughout the Greater Kansas City region. Whether it is innovating new lifesaving cancer treatments, advancing sustainability efforts to reduce our environmental impact or volunteering long hours to bring healthcare to the most vulnerable amongst us, these examples are a shining testament to the quality of people I am proud to call my colleagues. Every day they rise to the challenge with grace and an unwavering commitment to serving our patients, our colleagues and our communities.



Mel Lagarde
President & CEO
HCA Midwest Health



Who We Are

As Kansas City's leading healthcare provider, HCA Midwest Health is proud of our unwavering commitment to delivering high-quality, compassionate healthcare through some of the most advanced technology, programs and services available.

We offer seven hospitals, the largest physician network and more convenient access points than any other area healthcare system—including emergency rooms, outpatient centers, physician practices, urgent cares and surgery centers. In addition, through outreach sites located throughout the region, we provide local residents access to physicians, services and a wealth of other healthcare resources all within their own communities.

HCA Midwest Health's physicians, specialists and support staff are devoted to improving healthcare in Greater Kansas City and the outlying areas with innovative, cost-effective care. To ensure community needs are met, we invest in cutting-edge technology and continually expand facilities and services, as well as partner with numerous local charitable and civic organizations to provide leadership, volunteers and funding. As one of Kansas City's largest private sector employers, HCA Midwest Health is dedicated to the growth, success and well-being of the communities we serve.

HCA Midwest Health By the Numbers



10,014 Employees



2K+ Active physicians
on medical staff



681,780 Patient
encounters*



211,163 ER visits*



7 Hospitals



9 CareNow urgent
care centers



8 Surgery centers



11 ERs



1 Managed hospital



1 Psychiatric hospital



1 Transfer center



1 Burn center



7 Sarah Cannon
Cancer Centers



3 Graduate Medical
Education programs



85 Physician practices



35 Outreach clinics



12 Telehealth
service lines



28K Telehealth
inpatient consults

Part of the HCA Healthcare Family

HCA Midwest Health is a part of HCA Healthcare, a collaborative healthcare network comprised of more than 281,000 colleagues dedicated to giving people a healthier tomorrow.

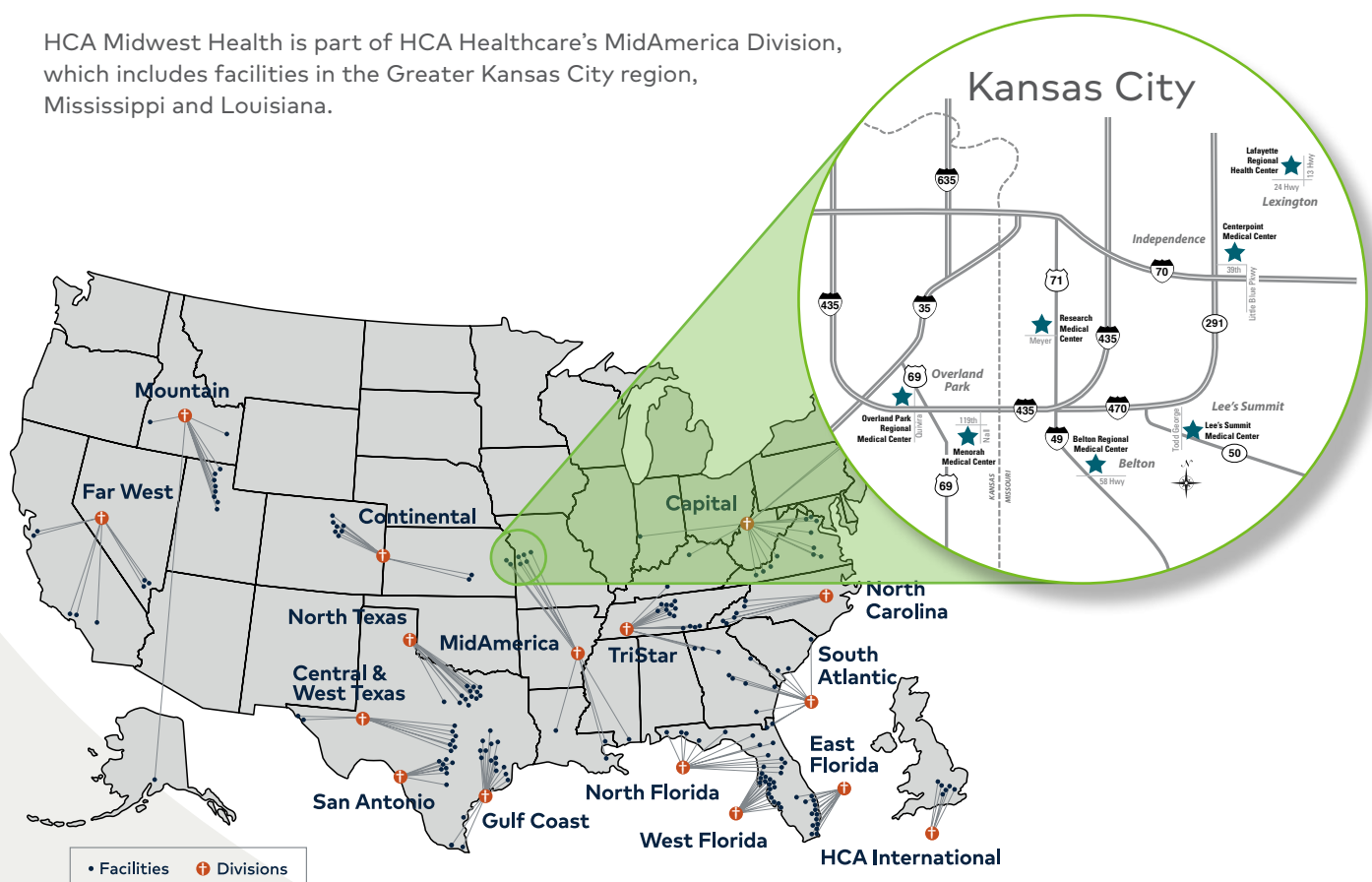


In 1968, HCA Healthcare's founders envisioned creating a healthcare company with the scale, resources and clinical expertise to provide patient-focused care at a time when many communities were growing rapidly and needed more access to healthcare. Today, more than 50 years later, that original vision thrives.

Located in 21 states and the United Kingdom, the scale of HCA Healthcare enables us to conduct leading-edge research, share best practices and support services across facilities, and most importantly, deliver the type of care patients need, when and where they need it. Each year, approximately 5% of all U.S. hospital services happen at an HCA Healthcare facility. In 2019, this included 34.8 million patient encounters, 9.2 million emergency room visits and 219,761 babies delivered.

We are proud to be a part of HCA Healthcare, driven by our collective mission: *Above all else, we are committed to the care and improvement of human life.*

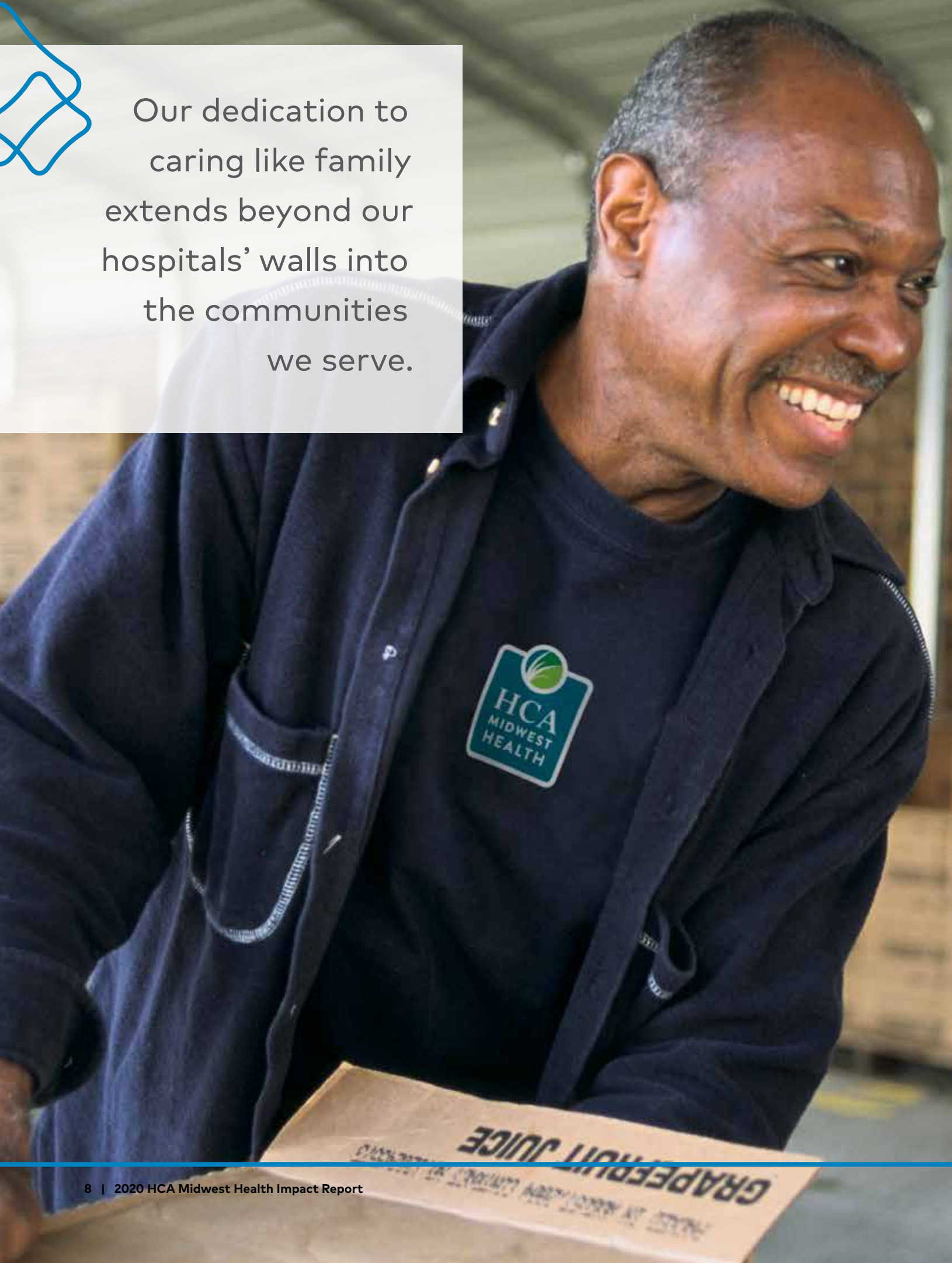
HCA Midwest Health is part of HCA Healthcare's MidAmerica Division, which includes facilities in the Greater Kansas City region, Mississippi and Louisiana.







Our dedication to
caring like family
extends beyond our
hospitals' walls into
the communities
we serve.





Caring for Our Community

In 2019, HCA Midwest Health contributed nearly \$1 million in charitable contributions to care for our community.

Investing in the Community

We strive to do our part to help the Kansas City region thrive through volunteering, giving and partnering with organizations whose missions align with our own. We're also a significant contributor to our local economy, as employers and taxpayers.

10,014

people employed

\$827.2

million in payroll and benefits

\$116.7

million in taxes to support
fundamental local infrastructure,
such as schools and roads

\$147.7

million for delivery of charity care,
uninsured discounts and other
uncompensated care

Giving Back

- American Cancer Society
- American Heart Association
- Bra Couture KC
- Brain Injury Association
- Cancer Action
- Charlie’s House
- Circle of Hope NICU Foundation
- Cristo Rey
- Crohn’s and Colitis Foundation
- Deanna Rose Farmstead
- Giving the Basics
- Head for the Cure
- Health Partnership Clinic
- Jewish Community Center
- Jewish Family Services
- Kansas City Care Clinic
- Kansas City Urban Youth
- Kansas City Zoo
- Keep the Spark Alive Foundation
- Komen Greater Kansas City
- Leukemia & Lymphoma Society
- Making Strides Against Breast Cancer
- March of Dimes
- Pancreatic Cancer Action Network
- Rose Brooks Center
- The Research Foundation
- Wonderscope Children’s Museum

We don’t just work in the Greater Kansas City community, we live there, too, with our families and our friends. We want to do our part to help our community thrive and grow by sharing our experts, educators and volunteers.

Nearly \$1 million in charitable donations

At HCA Midwest Health, we are raising the bar for patient care by collaborating with community leaders to help solve community problems. We’re partnering with these organizations (partial list to the left) to build stronger, healthier communities.

Right: Research Medical Center’s Human Resources team gathered volunteers to help paint houses in a neighborhood near the hospital.



Employee Highlight



Aisha Palmer, RN, MSN

**Sarah Cannon Cancer Institute at
Centerpoint Medical Center**

Innovating new approaches in patient care drives nurse Aisha Palmer and has led her to identify barriers for patients receiving oral chemotherapy. For example, she saw an increased time from the start of the written chemotherapy prescription to the time the patient actually received the drug. As a result, immediate and long-term changes were made that reduced the average wait time for lifesaving, life-altering chemotherapy drugs from 15-20 business days to 3-5 business days. This significant reduction not only improved patients' outcomes and their ability to get the medication and care they so desperately needed, it also improved physicians' ability to provide and manage care.

Aisha also found limited documentation regarding drug changes and limited follow-up care to monitor and treat patients' side effects and concerns. HCA Midwest Health was able to develop and create a new and important job description for an Oral Chemotherapy Coordinator Registered Nurse to address this critical gap.

Crushing the Opioid Crisis

More than 130 people die every day as the result of an opioid overdose in the United States, according to the National Institute on Drug Abuse. To help combat this crisis, HCA Midwest Health is taking action and making a real difference for patients, families and communities.

In September 2019, HCA Midwest Health was proud to be among the 100 HCA Healthcare facilities in 16 states to host a "Crush the Crisis" opioid take-back event. Menorah Medical Center and Research Medical Center teamed with law enforcement from Johnson County, Kansas, and Jackson County, Missouri, for the community service event. The goal was to raise awareness of opioid addiction and educate community members of the proper way to dispose of unused and expired medications.

**150 pounds of unused and expired
prescription medications collected**

Right: HCA Midwest Health was proud to be among the 100 HCA Healthcare facilities in 16 states to host a "Crush the Crisis" opioid take-back event.

Making an Impact

As part of HCA Healthcare, HCA Midwest Health is committed to helping combat the misuse of opioids and improving lives. HCA Healthcare proudly partners with the National Academy of Medicine's Action Collaborative on Countering the U.S. Opioid Epidemic, consisting of more than 50 organizations that share best practices and identify gaps in the safe treatment of opioid addiction.

In addition, HCA Healthcare uses the science of “big data” to reduce opioid misuse and transform pain management with initiatives in surgical, emergency and other care settings. These include:

- Enhanced Surgical Recovery (ESR)/ ALternatives to Opioids in the Emergency Room (ALTO in the ER). In this multi-modal approach to acute pain management, HCA Healthcare uses two or more methods or medications to reduce the need for opioids to manage a patient's pain while recovering from surgery or in the emergency room. ALTO protocols were expanded to all HCA Healthcare facilities nationwide in 2019.
- Electronic Prescribing of Controlled Substances (EPCS). Physicians have access to aggregated electronic health records that make it more difficult for medication-seekers to doctor-shop or alter prescriptions. ECPS is available at all HCA Healthcare facilities.



Diversity and Inclusion

At HCA Midwest Health, we foster a culture where everyone is welcome and has a voice, regardless of age, gender, disability, race, color, ancestry, citizenship, religion, pregnancy, sexual orientation, gender identity or expression, national origin, medical condition, marital status, veteran status, or payment source or ability.

HCA Midwest Health has enacted inclusive policies on hiring, recruitment and leadership development.

We're also proud to be a military veteran and military spouse employer. HCA Healthcare has been designated a Military Friendly Employer and Military Spouse Friendly Employer by VIQTORY. In 2019, HCA Midwest Health hired 117 veterans.

We continuously seek opportunities to cultivate and sustain community partnerships that deepen our understanding, broaden our reach and allow us to invest in healthier tomorrows for the communities we serve. Highlights from 2019 included:



The Employee Advisory Group (EAG) for our Physician Services Group coordinated a Giving the Basics campaign to collect personal hygiene products for families in need. The EAG collected 12,916 items, which were distributed to more than 65 pantry locations and 186 schools in 14-plus school districts throughout the Kansas City area.



The College Park Family Care team raised \$3,020 for Hope Family Care Center by raffling themed gift baskets during the summer. The Hope Family Care Center provides healthcare to Kansas Citians who are uninsured or underserved.



Research Medical Center's Human Resources team gathered volunteers to help paint houses for Tri-Blenheim Neighborhood Association, a community near the hospital. The group painted interior rooms at four houses belonging to elderly or disabled homeowners.



Colleagues from HCA Midwest Health and Research Medical Center, along with Research College of Nursing students, hosted a Halloween party at Research for 250 area foster children and their families. They provided the kids with costumes, and attendees enjoyed treats and games.



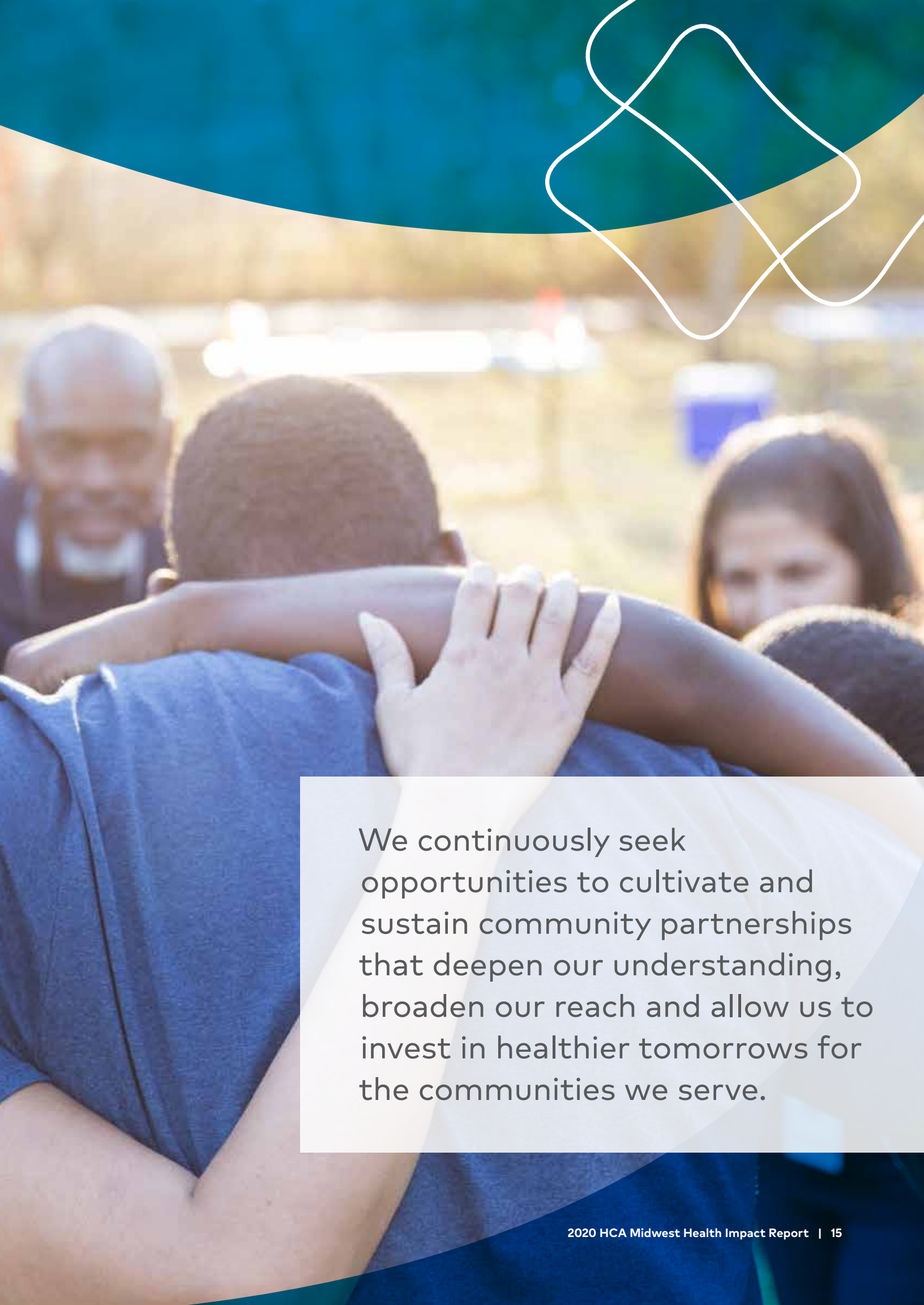
During December, our Information Technology Group sponsored a community coat drive and collected 145 coats.



Colleagues from Research Medical Center and Menorah Medical Center volunteered at Harvesters where they helped prepare meals for the needy.



Radiology Department members from College Park Family Care, along with their family members, volunteered to serve meals at St. Mary's Food Kitchen in Kansas City, Kansas. St. Mary's provides free meals to those in need 365 days a year.



We continuously seek opportunities to cultivate and sustain community partnerships that deepen our understanding, broaden our reach and allow us to invest in healthier tomorrows for the communities we serve.



Environmental Sustainability

As stewards of the environment, HCA Midwest Health works to protect and preserve natural resources by meeting and exceeding legal and regulatory standards. We closely monitor our environmental impact and are committed to improving our energy efficiency and reducing waste. We're proud that our hospitals rank in the top 50% of HCA Healthcare hospitals nationwide for energy efficiency.

- 7,460 pounds recycled batteries
- 5,642 pounds recycled fluorescent tubes
- 1,123,190 pounds recycled shredded paper
- 1,094,614 pounds recycled plastics, metal/aluminum cans, paper, newspapers, cardboard, paperboard

Right: Lee's Summit Medical Center teamed up with Lee's Summit North and Lone Jack High Schools to help educate students and community members on hands-only CPR techniques during half time of a basketball game.

Emergency Preparedness

As a part of HCA Healthcare, HCA Midwest Health is connected to the support and resources needed to respond quickly to emergencies or large-scale disasters. We have access to best practices learned from such natural disasters as wildfires, earthquakes, tornadoes and storms, as well as man-made crises like major car accidents and mass shootings. With planning, preparation and ongoing training, we are able to stay at the ready to respond to emergencies.

In support of our commitment to emergency preparedness and as healthcare leaders in the region, we believe it's critical that we extend our efforts into our communities. We're proud of our various community education initiatives to train others on lifesaving techniques.

For example, HCA Midwest Health's specially trained trauma educators have continued to participate in the national Stop the Bleed awareness campaign since it launched in 2015. The goal of this bleeding control course is to turn civilians into immediate responders who can help those who've sustained traumatic injuries in shootings, auto accidents, fires and other devastating incidents.

According to Stop the Bleed, 20% of people who've died from traumatic injuries could have survived with quick bleeding control. Through free Stop the Bleed outreach trainings in 2019, HCA Midwest Health emergency medical personnel have helped train nearly 800 citizens to take the lead whether they're at school, work, a house of worship or another public venue and apply basic lifesaving techniques during emergencies.

In addition, several HCA Midwest Health facilities offered free CPR trainings throughout 2019 to help community members learn how to properly intervene when someone's suffering a heart attack. For example, Lee's Summit Medical Center teamed up with Lee's Summit North High School and Lone Jack High School to help educate students and community members on hands-only CPR techniques during half time of a basketball game. It was one of many events during American Heart Month (February) where HCA Midwest Health experts provided community education and awareness around the signs and symptoms of a heart attack to empower residents to save lives.





Doing What's Right for Patients

Our mission
compels us to
ensure safe,
compassionate,
equitable care
to anyone who
seeks it.





Ensuring Convenience and Access

HCA Midwest Health is proud to offer a diverse range of care options. Our 150-plus sites of care serve communities across the Midwest region. In addition, we provide five inpatient and six outpatient behavioral health programs for seniors, adults and adolescents to meet and best accommodate the individual mental health needs of our patients.

What's more, our high-quality, integrated and clinically focused telehealth programs and services allow caregivers at rural hospitals to consult remotely with clinicians at larger facilities. Telehealth has allowed us to provide more expedient care and connect specialists to the communities where they are needed most.

Telehealth Expands Our Reach

At HCA Midwest Health, we are at the forefront of telemedicine, providing innovative programs to more than 20 communities outside the Kansas City metro area. In 2019, we completed approximately 28,000 inpatient consults at our facilities, and we added teleNICU, telecardiology and telepulmonary service lines to our outreach hospitals. In addition, we began utilizing a stethoscope to hear the heart and lungs of patients who are 50-plus miles away.

Telehealth gives patients in rural areas close-by access to medical specialists and allows them to stay and receive treatment in their local communities for longer. And rural hospitals get 24-hour access to specialized expertise, which improves the immediate care for their patients and helps keep costs lower for everyone by not having to transfer patients.

HCA Midwest Health currently provides telemedicine consults for:

- Stroke
- Neurology (inpatient and outpatient)
- Inpatient cardiology
- Psychiatry
- Social work
- Pulmonary
- Neurosurgery
- General surgery
- Neonatology
- Oncology
- Surgical oncology
- Infectious disease



Care Navigator Directs Patients Quickly, Easily

In October, HCA Midwest Health launched Care Navigator, a direct-to-consumer digital platform that routes patients to the right site of care. The platform's goal is to provide a standardized, convenient, digital solution to quickly navigate consumers to the most appropriate HCA Midwest Health care setting 24/7. This might include virtual visit, emergency room, physician appointment, nurses-on-call or CareNow Urgent Care.

Consumers simply access Care Navigator through a landing page on an HCA Midwest Health hospital website or through HCA's MyHealthONE, a digital patient portal, and complete a short online triage process. In 2019, 213 patients used Care Navigator and 53 completed a video visit with a provider.

HCA Midwest Health was one of the first divisions within HCA Healthcare to use Care Navigator. It is also used in Louisiana, Mississippi, North Texas and North Carolina. Future plans include rolling out Care Navigator nationwide to other HCA Healthcare facilities.



Keeping Patients Safe

Our goal is to make HCA Midwest Health the safest community of care. To achieve this, we have created a robust safety learning organization, where we use safety science and systems engineering to redesign and improve our processes.

We have 90 healthcare-trained security officers who help protect our sites of care. In addition, Research Medical Center has officers from the Kansas City Missouri Police Department on-site 24/7, while officers from the Independence Missouri Police Department are stationed at Centerpoint Medical Center 16 hours each day.

In 2019, HCA Midwest Health colleagues completed more than 3,400 training courses in such areas as de-escalation, situational awareness and active shooter preparedness.

Our colleagues use a security app, LiveSafe, to instantly text or call local security with concerns, which help us proactively identify risks and increase security protections to keep our facilities safe. We also use advanced camera, alarm access control and exterior lighting technologies throughout our hospital campuses.





MyHealthONE

Across the HCA Healthcare network, more than 2 million patients have used MyHealthONE, a digital patient portal and app, to access their medical records and lab results, find a doctor or make an appointment. We continually seek ways to empower our patients to manage their health.

Leapfrog Safety Ratings

These HCA Midwest Health hospitals received a Hospital Safety Grade of "A" or "B" from The Leapfrog Group in fall of 2019:

- **Belton Regional Medical Center**
- **Centerpoint Medical Center**
- **Lee's Summit Medical Center**
- **Menorah Medical Center**
- **Overland Park Regional Medical Center**
- **Research Medical Center**

Employee Highlight



Marlene Cailteux

Menorah Medical Center

For Marlene Cailteux, making an impact on others' lives extends beyond her role as Outpatient Rehabilitation Manager at Menorah Medical Center. She does this through volunteer leadership with the Kansas Association for Youth (KAY) and Kansas Association for Youth Alumni Network (KAYAN).

For 36-plus years, Marlene has served on the KAY Leadership Camp staff and is currently its Associate Director where she helps promote a lifelong passion among students for serving others. As a charter member of KAYAN, Marlene has served on its Board of Directors since 2012 and is currently its Vice President. Marlene is passionate about making a difference in kids' lives and she's done just that for countless youth throughout Kansas.

Patient Financial Assistance Support

As a part of HCA Healthcare, we have several industry-leading support services, policies and practices designed to help our patients who need financial assistance.



Patient Discounts and Protection

Covering both uninsured and underinsured patients, HCA Midwest Health applies a sliding scale discount on patient amounts due based on federal poverty guidelines (FPG) and household income. As part of HCA Healthcare, our need-based discount program is among the most generous in the industry.



Price Information

We make pricing and financial information available online to help patients make informed healthcare decisions. This includes pricing estimates as well as information about our billing process.



Billing Process

We are committed to responsible billing and collections. As part of HCA Healthcare, our policies and resources reflect our desire to mitigate personal financial issues arising from our patients' medical bills. Financial counselors work with patients to establish interest-free payment arrangements. Patients who make payments at the time of service for their estimated financial liability receive a discount that ranges from 10% to 20% of the amount owed.



Financial Counseling

Financial counselors are available to help patients understand and access programs and discounts for which they may be eligible.

\$147.7

**million uncompensated
care provided**

Equity of Care

HCA Midwest Health recognizes the diverse backgrounds of our patients, partners, physicians and colleagues, and we are committed to providing all patients with equitable access to culturally competent, patient-centered care.

- We deliver care in multiple languages to make sure communication and language are not barriers to quality healthcare.
- We focus on access to services, including web accessibility, to ensure our patients can perceive, understand, navigate and interact with our access points.

Learning Health System

As a part of HCA Healthcare, HCA Midwest Health has access to industry-leading clinical data from approximately 35 million annual patient encounters to inform and improve patient care across the Kansas City region. We regard this capability as both a privilege and a responsibility.

We bring and share our learnings with the communities we serve, as well as government agencies. Drawing upon the latest scientific evidence and actively conducting our own large-scale health research, we aim to deliver high-quality care and outcomes.

Through machine learning and data science, we can use data and algorithms to better inform outcomes for patients and create tools that can deliver information to providers in real-time to help identify life-threatening conditions, such as sepsis. This commitment improves safety, quality, efficiency and, most importantly, patient care.

Employee Highlight



Josie Williams, RN

Centerpoint Medical Center

Nurse Josie Williams goes above and beyond to ensure patients and their families receive compassionate care, no matter their background or situation. She exemplified this last winter when a homeless man and his dog came to the Centerpoint Medical Center ER after the tent they'd been sleeping in caught fire, resulting in extensive burns for both.

Josie worked with the local police department and a veterinarian to secure treatment for the dog at a local animal hospital. While the patient received care for his burns, he was more concerned about his pet, which later died. The devastated patient was left alone with only the clothes on his back. Josie took it upon herself to purchase a new tent and sleeping bag for the patient—using her own money—and made transportation arrangements for the patient to say goodbye to his pet before it was laid to rest.

Employee Highlight



Brittney Berryman, RN

Research Medical Center

Delivering compassionate care is a hallmark of Brittney Berryman, Clinical Nurse Coordinator for the Labor and Delivery Department. And it was on full display when a homeless patient in an advanced stage of pregnancy arrived via ambulance with abdominal pain.

The care team discovered the patient had a psychiatric diagnosis and wasn't compliant in taking medication. The patient, who insisted she wasn't pregnant, became agitated hearing the word "baby," so Brittney helped calm her so she could undergo an ultrasound and tests. As labor progressed, she became more agitated and began pacing and saying she wanted to leave. Worried that the patient could endanger herself and the baby, Brittney remained at her bedside and helped calm her by dimming the lights, rubbing her back and playing soothing music from her phone. A strong bond and trust had been formed, and Brittney stayed beyond her shift until the baby was born and the patient was transferred to another unit.



Care Assure

Preventing emergencies and connecting people with the right care saves lives and improves quality of life. HCA Midwest Health uses a patented information technology system, Care Assure, to pull data from various sources and identify individuals who may need crucial care to prevent a future cardiac emergency.

The Care Assure program automatically leverages advanced tests already being performed during an emergency, inpatient or outpatient visit to detect arrhythmias, heart valve issues or other problems that otherwise may have gone undetected so they can be treated preventively. As part of Care Assure, a specially trained nurse navigator reviews the patient's chart and treatment plan and then follows up to connect the patient with the appropriate care.

Care Assure, the only program of its kind, is exclusive to HCA Healthcare hospitals. It was initially launched at HCA's JFK Medical Center in Atlantis, Florida, in 2012. It is currently implemented at 156 HCA hospitals nationwide and in the process of being rolled out to all other HCA facilities. HCA Midwest Health continues to look at ways to expand this critical program to help modify risk, prevent more emergencies and help Kansas City become a healthier community.

Research and Innovation

HCA Midwest Health partners across HCA Healthcare's more than 2,000 sites of care to conduct leading-edge research, share best practices and support, and develop technologies to improve patient care.

Our cardiovascular physicians and research teams conduct clinical studies to support the development of new medications and procedures that we hope will make a difference in our patients' overall health as well as the future of cardiovascular care.

- Established in 2005, Midwest Heart & Vascular Specialists Clinical Research Program has participated in more than 50 clinical studies involving hyperlipidemia, acute coronary syndrome, heart failure, hypertension, atrial fibrillation, anticoagulation, cardiovascular outcomes, coronary computed tomography angiography (CCTA) imaging and device trials. To date, more than 2,000 patients have been enrolled in clinical studies at Midwest Heart & Vascular Specialists to forward the progress of cardiovascular health.
- Established in 2018, the Kansas City Heart Rhythm Institute Clinical Research Program conducts research at four HCA Midwest Health hospitals and clinics to provide patients with cutting-edge care. Our research teams have worked on more than 15 research projects, both industry sponsored and investigator initiated trials, that focus on atrial fibrillation, atrial arrhythmias, heart failure and left atrial appendage.

Sarah Cannon Cancer Institute at HCA Midwest Health is a network-accredited cancer program (one of only 63 nationally to earn network accreditation) that provides world-class cancer care to patients throughout the region. Through Sarah Cannon Research Institute's innovative clinical research trials, we're working to advance cancer care and bring life-changing therapies to patients. Some highlights from 2019:

- Through Research Medical Center, Menorah Medical Center and Centerpoint Medical Center, we enrolled 48 patients in oncology research studies and saw enrollment in our hematology program jump 12% from the previous year.
- We activated 23 new cancer trials in 2019, with the highest volumes in hematology malignancy (seven trials), breast (eight trials) and lung (four trials).
- In October, we hosted a successful FDA audit, ensuring the highest possible quality within our research program.





We have a lot
to be proud of,
but at our core,
our greatest
strength is our
people.



Excellent People Make Excellence Happen



Investing in Our People

Professional Development

We firmly believe that in order to take care of others we must also be there for each other—whether that’s supporting our colleagues through tough times or encouraging development opportunities for advancement.

Through our Leadership Institute Academy, we equip leaders to effectively execute strategy, drive operational excellence and lead others to effective action. In 2019, we selected 18 high-potential leaders for the cohort-based program that provides leadership development and a capstone project to prepare directors for junior executive roles. Leadership Institute Academy participants are immersed in highly relevant situations and discussions that enable them to quickly impact business results. In total, HCA Midwest Health has 64 leaders who’ve participated in the Leadership Institute Academy.

Through the HCA Healthcare Leadership Institute, colleagues can also take advantage of director development programs. These programs help those in emergency, surgical or critical care/ICU service lines increase their leadership skills or move into director positions.

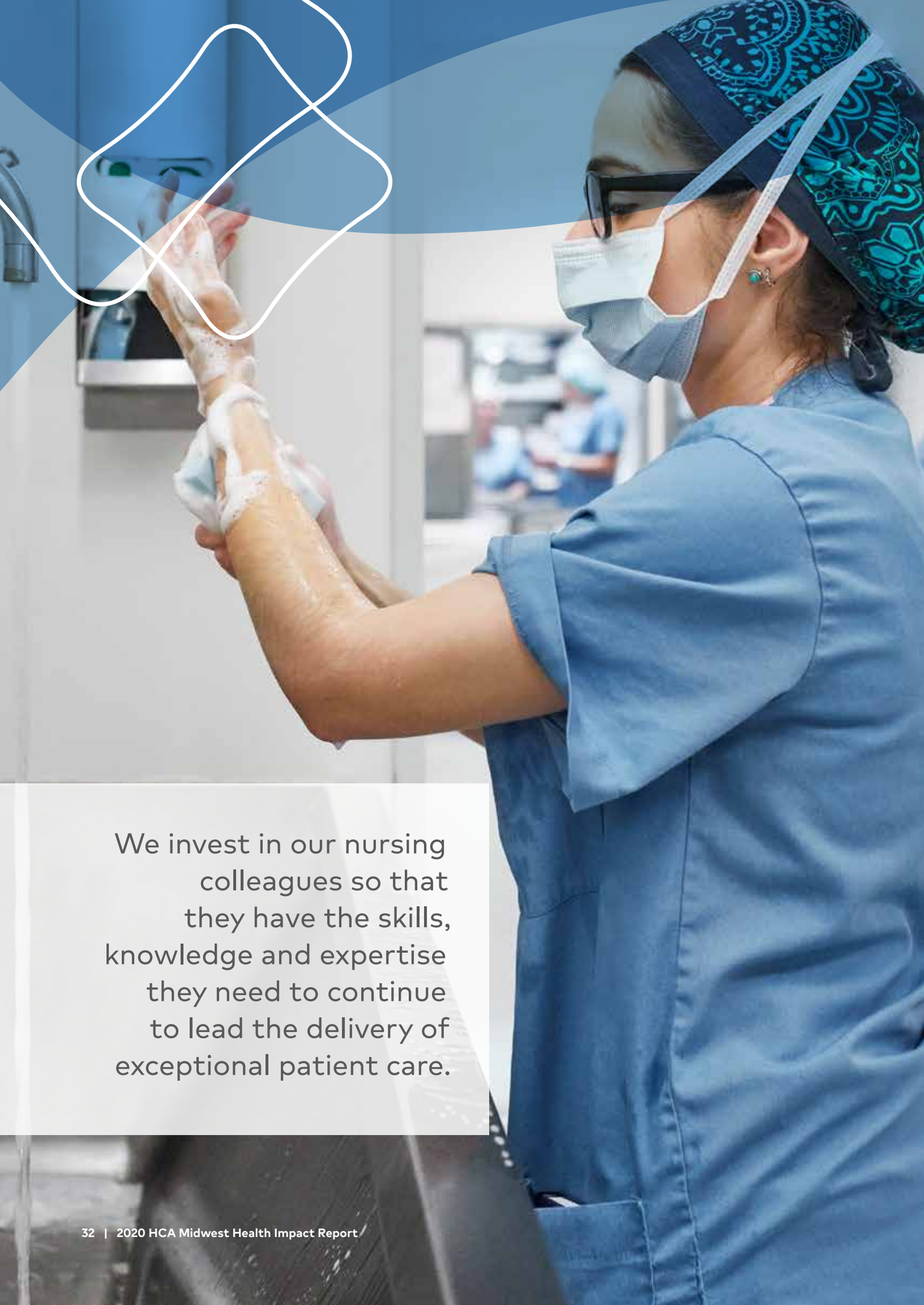


Helping Our Colleagues

The HCA Healthcare Hope Fund was established in 2005 to give colleagues a way to support each other in times of natural disaster, illness, injury, domestic violence, the death of a loved one or any of a number of unavoidable hardships. Since then, our Hope Fund has become a deeply appreciated part of our culture.

In 2019, the HCA Healthcare Hope Fund benefitted HCA Midwest Health colleagues by awarding 104 grants totaling \$264,500.





We invest in our nursing
colleagues so that
they have the skills,
knowledge and expertise
they need to continue
to lead the delivery of
exceptional patient care.

Nursing at HCA Midwest Health

HCA Midwest Health nurses work hard to raise the bar for our patients, our organization and the nursing profession. This is why we invest in the technologies, infrastructure and clinical education nurses need to develop professionally. Not only does this advance the nursing profession, it also gives HCA Midwest Health a robust talent pool to recruit from.

For example, we are proud of the strong relationships that we've developed with 31 nursing schools throughout the region. In 2019, we welcomed 89 junior-level student interns who received hands-on training at Centerpoint Medical Center, Research Medical Center, Overland Park Regional Medical Center, Menorah Medical Center and Lafayette Regional Health Center. They were among the 241 total new nursing graduate hires who became part of the HCA Midwest Health family in 2019.

Our Specialty Training Apprenticeship for Registered Nurses (StaRN) program is a unique apprenticeship that provides intense post-graduate training to newly licensed nurses. The 12- to 23-week program combines classroom instruction, a robust simulation experience and hands-on clinical training for nurses specializing in the medical/surgical, telemetry, intensive and progressive care units, and emergency and operating room areas. In 2019, 253 nurses participated in the StaRN program.

Employee Highlight



Alissa Potocnik

Lee's Summit Medical Center

As a Speech Language Pathologist in the Inpatient Rehabilitation Department, Alissa Potocnik excels at working with those who especially need her expertise: patients with aphasia. She was instrumental in developing a local Community Aphasia Group, which helps patients improve their communication abilities and provides their caregivers with the resources and support they need.

Alissa creates new plans and activities for each session to keep attendees engaged and foster communication, as well as social activities to build camaraderie and community. She also serves as an adjunct professor at Rockhurst University and invites her speech therapy students to work with the group to develop their clinical skills. Thanks to Alissa's leadership, the Community Aphasia Group has become well-known and draws referrals from other area facilities and therapists.

Research College of Nursing

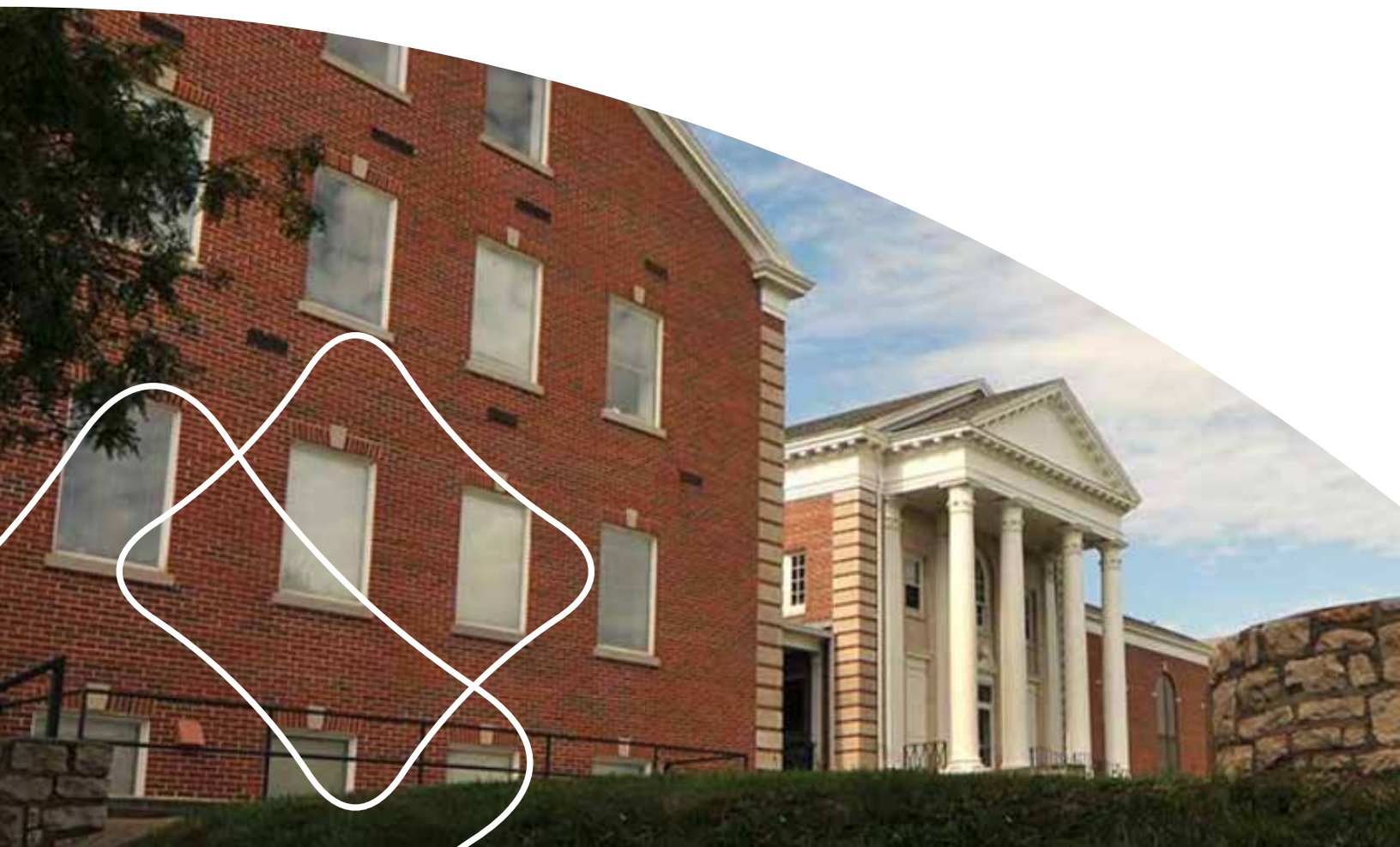
Our Research College of Nursing is a fully-accredited institution that prepares nursing leaders to thrive in today's complex healthcare environment. In addition to its accelerated and traditional BSN program, Research College of Nursing offers online MSN degree options, including Nurse Educator and Executive Practice & Healthcare Leadership. In 2019, Research College of Nursing enrolled 647 nursing students, awarded 182 degrees and added to its programming, which included:

- Expanded the Dedicated Education Unit program into five HCA Midwest Health facilities, becoming the largest in Kansas City
- Introduced early admission acceptance for high school seniors and college freshman pursuing a Bachelor of Science in Nursing
- Announced plans to independently offer the Bachelor of Science in Nursing degree, which allows Research College of Nursing to expand program offerings and better support the Kansas City region with a larger talent pool of baccalaureate- and master's-prepared nurses
- Resumed summer Nursing Experience, a day camp for high school juniors and seniors

On a larger scale, the Research College of Nursing's award-winning academic practice partnership with Research Medical Center has become a model of excellence for HCA Healthcare facilities across the nation.

Career Development

We also offer career development opportunities for our existing nursing colleagues. All HCA Midwest Health facilities have monthly or quarterly meetings with nurses to identify internal advancement opportunities. They then work with their chief nursing officer and human resources representative to "map" a career path to achieve their advancement goal. In addition, our facilities offer internal recruitment fairs and educators provide pathways to help colleagues gain skills and move into new areas of care.





Units of Distinction

Every year, HCA Healthcare recognizes nursing departments that are defining excellence in nursing practice through nursing-specific indicators and departmental performance through its Unit of Distinction Program. These teams and leaders are rewarded for actively partnering and collaborating with other patient care team stakeholders to problem solve and create best practices within their local organizations.

In 2019, five HCA Midwest Health facilities had nursing teams who were recognized as a Unit of Distinction winner or who received honorable mentions:

- Belton Regional Medical Center
- Centerpoint Medical Center
- Lee’s Summit Medical Center
- Menorah Medical Center
- Research Medical Center Brookside Campus

Left: The Research College of Nursing is located in Kansas City, Missouri.

Employee Highlight



Denise White

Belton Regional Medical Center

Paving the way for future generations of women leaders in her community drives Denise White. For the past six years, the pharmacist at Belton Regional Medical Center has volunteered her time with Awesome Ambitions, a local organization dedicated to mentoring young girls and preparing them for college and beyond.

Denise serves as the Executive Director of its Board and currently works with 40 young women to expose them to different career opportunities and to stress the importance of empowerment, safety, cybersecurity and mental health. Denise says she’s motivated by giving back and helping young women discover their potential.

Employee Highlight



Jordan Elefson

Lafayette Regional Health Center

As Lead Maintenance Engineer on the Plant Operations team, Jordon Elefson is testament that you don't need to work in a clinical role to make an impact on patients.

In 2019, a developmentally disabled patient was hospitalized for three months, and Jordon volunteered to sit with the patient numerous times. Although the patient was 21, her developmental level was that of a 6-year-old. Jordon developed a strong bond with the patient and was often the only person who could calm her when she became agitated. Jordon built a small swing outside the facility that was used to reward the patient's good behaviors and resulted in the added benefit of her needing fewer medical interventions to control her outbursts. This is just one example of Jordon going above and beyond to ensure patients are cared for.

Partnering with Physicians

With more than 2,000 physicians on staff and 85 physician practices, HCA Midwest Health believes partnering with and empowering our physicians in delivering exceptional care is the best way to guide advances in medicine across our network.

We are dedicated to fostering learning environments that cultivate excellence, and our three Graduate Medical Education (GME) programs train residents in the fields of family medicine, general surgery and internal medicine. All accredited by the Accreditation Council for Graduate Medical Education (ACGME), the programs attract residents from throughout the United States.

As part of HCA Healthcare, participants of HCA Midwest Health's GME programs can receive financial assistance through HCA's "Earn While You Learn" Resident/Fellow Stipend Program.

HCA Midwest Health GME Programs

- **Family Medicine**
One of the first programs in the country, our Family Medicine GME program began in 1974 and currently has 36 residents who practice at Research Medical Center.
- **General Surgery**
Launched in 2018, our General Surgery GME program welcomes five residents per year and currently has 10 residents who rotate among Menorah Medical Center, Overland Park Regional Medical Center and Research Medical Center.
- **Internal Medicine**
Our Internal Medicine GME program, also launched in 2018, currently features 36 residents who practice at Overland Park Regional Medical Center, Menorah Medical Center and Lee's Summit Medical Center.
- **Obstetrics/Gynecology**
In July 2020, HCA Midwest Health will add an Obstetrics/Gynecology GME program and welcome five residents to its inaugural class.

Employee Highlight



Tom Kettler, MD
Overland Park Regional Medical Center



Anne Kettler, MD
Overland Park Regional Medical Center

Tom, a family physician, and Anne, a dermatologist, have impacted countless lives by delivering healthcare to thousands of uninsured, underprivileged and underserved people through the Hope Family Care Center in Kansas City, Missouri. As the Center's Medical Director, Tom has worked without recognition or pay in a role that takes up about half his time, while his wife has served as a volunteer healthcare provider. The couple has also shared their medical expertise on multiple international medical mission trips in Africa. During their 30-year mission work, they've recruited dozens of others to become involved and help those less fortunate, including children in orphanages. Tom was also instrumental in starting a Missions Fund at HCA Midwest Health's College Park Family Care Center in Overland Park. The Fund provides hundreds of thousands of dollars annually to support HCA Midwest colleagues' participation in international and local medical missions.

Our Hospitals





Ensuring that community members have access to high-quality healthcare closer to where they live and work drives us at HCA Midwest Health. And as the area's largest healthcare network, we offer more than 150 locations and an array of services to meet the demands of the Greater Kansas City area's growing healthcare needs and provide patients with easy access.

Our more than 10,000 compassionate professionals work tirelessly every day to provide patients with the highest quality care no matter whether patients access our healthcare services in Jonson County, Kansas, or Jackson County, Missouri, or beyond. At HCA Midwest Health, we are dedicated to creating healthier tomorrows for those we serve and we remain committed to our Mission: *Above all else, we are committed to the care and improvement of human life.*

Belton Regional Medical Center

Belton, Missouri

[BeltonRegionalMedicalCenter.com](https://www.beltonregionalmedicalcenter.com)

Since 1984, our mission has been to provide the citizens of southern Jackson and northern Cass counties access to important health resources. To meet the growing medical needs of our community, we underwent a \$39.2 million renovation. Today, we offer a full range of inpatient and outpatient services, supported by our excellent staff, advanced technology and deep relationships within our community.

Our services

- Cancer care—Sarah Cannon Cancer Institute
- Cardiology
- Emergency services
- Intensive care unit (ICU)
- Laboratory
- Orthopedics
- PACU
- Radiology/imaging services
- Rehabilitation (occupational, physical, speech therapy)
- Respiratory therapy
- Sleep lab
- Specialty clinics
- Sports medicine
- Surgical services





Accreditations, awards and certifications

- American College of Radiology Gold Seal Accredited
- American College of Surgeons Commission on Cancer—Integrated Network Accreditation
- American Heart/Stroke Association Get with the Guidelines Stroke—Gold Plus Honor Roll Elite Plus - 2019
- Emergency Nurses Association Lantern Award
- Healthgrades—Patient Safety Excellence Award
- Pathway Designated by the American Nurses Credentialing Center
- State of Missouri—TCD Level III Stroke Center
- State of Missouri—TCD Level III Trauma Center
- The Joint Commission Gold Seal of Approval®—Hospital Accreditation
- The Joint Commission—Acute Stroke Ready Hospital
- The Joint Commission—Certification in Joint Replacement for Hips and Knees





Centerpoint Medical Center

Independence, Missouri

[CenterpointMedical.com](https://www.CenterpointMedical.com)

Centerpoint Medical Center is dedicated to providing compassionate care and the best possible customer service to our patients and their families. We constantly invest in state-of-the-art equipment and technology to offer some of the latest clinical services to our patients. We also provide numerous features for visitors, including sleeper chairs in patient rooms, comfortable waiting areas, wireless internet access throughout the facility and more.

Our services

- Cancer care—Sarah Cannon Cancer Institute
- Cardiology/cardiovascular surgery
- Electrophysiology
- Emergency services
- Gastroenterology
- Neonatal intensive care unit—level III
- Neurology/neurosurgery
- Orthopedics
- Pain management
- Radiology/imaging services
- Rehabilitation (inpatient and outpatient)
- Sports medicine
- Sleep disorders center
- Surgery
- Trauma center—level II
- Women's center
- Wound care

285

beds

481

physicians

1,483

employees

225

volunteers



Accreditations, awards & certifications

- American Academy of Sleep Medicine—Accredited Sleep Medicine Member Center
- American Association of Blood Banks—Laboratory Accreditation
- American Association of Cardiovascular and Pulmonary Rehabilitation—Certified Cardiac Rehabilitation Program
- American College of Radiology Gold Seal of Accreditation—Accredited Facility (all modalities)
- American College of Surgeons Commission on Cancer—Integrated Network Accreditation
- American College of Surgeons National Accreditation Program for Breast Centers—Breast Center Accreditation
- American Nurses Credentialing Center—Pathway Designated
- Blue Distinction® Center—Knee and Hip Replacement
- Chest Pain-MI Registry Performance Achievement Award Recipient—Platinum
- College of American Pathologists Laboratory Accreditation Program—Laboratory Accreditation
- Diagnostic Catheterization and Percutaneous Coronary Intervention Metrics Public Reporting—4 stars
- Implantable Cardiac Defibrillator Metrics 3-4 stars
- Intersocietal Accreditation Commission—Echocardiography
- MBSAQIP Bariatric Surgery Program Accreditation
- Missouri Time Critical Diagnosis System—Level II STEMI Designated Hospital
- Society of Cardiovascular Patient Care—Chest Pain Center Accreditation with PCI
- The Joint Commission Advanced Certification—Bariatrics
- The Joint Commission Advanced Certification—Chest Pain
- The Joint Commission Advanced Certification—Stroke (Primary Stroke Center)
- The Joint Commission Advanced Certification—Total Hip & Total Knee Replacement
- The Joint Commission Gold Seal of Approval®—Hospital Accreditation
- The Leapfrog Group—Imaging Award for low-dose pediatric scanning
- The Leapfrog Group's Hospital Safety Score—"A" Grade in Patient Safety

Lafayette Regional Health Center

Lexington, Missouri

lrhc.com

Lafayette Regional Health Center is a critical access hospital, accredited by The Joint Commission, located in historic Lexington, Missouri, 50 miles east of Kansas City. This primary care hospital offers a comprehensive array of services in a small-town environment. Patients enjoy the comfort of knowing they're receiving quality healthcare in their hometown. Lafayette Regional Health Center also owns and operates three physician clinics throughout Lafayette County.

Our services

- Allergy/asthma
- Cancer care—Sarah Cannon Cancer Institute
- Cardiology
- Ear, nose and throat
- Emergency services
- Gastroenterology
- Gynecology
- Intensive care unit (ICU)
- Laboratory services
- Medical-surgical nursing
- Nephrology
- Neurology
- Oncology/hematology
- Ophthalmology
- Orthopedics
- Pain management
- Podiatry
- Pulmonary and respiratory services
- Radiology/imaging services
- Rehabilitation services (physical, occupational, speech, wound, pelvic floor, pediatric)
- Rheumatology
- Sleep medicine
- Surgical services
- Swing bed or skilled recovery
- Urology





Accreditations, awards & certifications

- American College of Radiology Gold Seal of Accreditation—Computed Tomography Accredited Facility
- American College of Radiology Gold Seal of Accreditation—Mammography Accredited Facility
- American College of Radiology Gold Seal of Accreditation—MRI Accredited Facility
- American College of Radiology Gold Seal of Accreditation—Ultrasound
- American College of Surgeons Commission on Cancer—Integrated Network Accreditation
- College of American Pathologists—Laboratory Accreditation
- Missouri Time Critical Diagnosis System—Level III STEMI Designated Hospital
- Missouri Time Critical Diagnosis System—Level III Stroke Designated Hospital
- The Joint Commission Gold Seal of Approval—Hospital Accreditation
- Women's Choice Award—Emergency Care Award





Lee's Summit Medical Center

Lee's Summit, Missouri

LeesSummitMedicalCenter.com

Lee's Summit Medical Center is a full-service hospital serving Lee's Summit and the surrounding areas. All services are supported by a medical staff of nearly 150 physicians who represent more than 40 specialties. Lee's Summit Medical Center has more than 500 highly trained staff members and 84 volunteers.

Our services

- Bariatric surgery program
- Bronchoscopy
- Cancer care—Sarah Cannon Cancer Institute
- Cardiology/cardiovascular surgery
- Endoscopy services
- Cystoscopy
- Emergency services
- Orthopedics
- Imaging services
- Neurology
- Pain management
- Palliative care
- Physical, speech and occupational therapy
- Sports medicine
- Radiology/imaging services
- Respiratory and pulmonary services
- Sleep disorders center
- Surgical services
- Women's services
- Wound care center

80
beds

148
physicians

509
employees

84
volunteers



Accreditations, awards & certifications

- American Academy of Sleep Medicine Accreditation
- American Association of Cardiovascular and Pulmonary Rehabilitation—Certified Cardiac Rehabilitation Program
- American College of Radiology Gold Seal of Accreditation—Computed Tomography
- American College of Radiology Gold Seal of Accreditation—Mammography
- American College of Radiology Gold Seal of Accreditation—MRI
- American College of Radiology Gold Seal of Accreditation—Nuclear Medicine
- American College of Radiology Gold Seal of Accreditation—Ultrasound
- American College of Surgeons Commission on Cancer—Integrated Network Accreditation
- American Heart Association/American Stroke Association Get with The Guidelines® Gold Plus Honor Roll Elite—Stroke Achievement
- American Heart Association—Target Stroke Honor Roll
- American Nurses Credentialing Center Pathways Designated Hospital
- College of American Pathologists—Accredited Laboratory Program
- Healthgrades Patient Safety Excellence Award
- Missouri Time Critical Diagnosis System—Level II STEMI Designated Hospital
- Missouri Time Critical Diagnosis System—Level II Stroke Designated Hospital
- Modern Healthcare 100 Best Places to Work in Healthcare
- The Joint Commission—Advanced Certification in Stroke (Primary Stroke Center)
- The Joint Commission—Chest Pain Certification
- The Joint Commission—Core Accreditation for Total Hip and Total Knee Replacement
- The Joint Commission's Gold Seal of Approval®—Hospital Accreditation
- The Joint Commission's Top Performer on Key Quality Measures®
- The Leapfrog Group Hospital Safety—Grade A Six Consecutive Terms

Menorah Medical Center

Overland Park, Kansas

MenorahMedicalCenter.com

Menorah Medical Center is a full-service, acute care hospital and ER serving the communities of Overland Park and Leawood. We focus on providing compassionate care and some of the most advanced treatment options available in the Kansas City region. Menorah's world-class medical staff offers exceptional experiences and extraordinary medicine for adults, newborns, teens and children.

Our services

- Bariatric and metabolic program
- Breast center
- Cancer care—Sarah Cannon Cancer Institute
- Cardiology/cardiovascular surgery
- Diabetes education
- Emergency services
- Gastroenterology
- Intensive care unit (ICU)
- Laboratory
- Neonatal intensive care unit—level II
- Neurology/neurosurgery
- Orthopedics
- Pediatric neurosurgery
- Pulmonary/respiratory services
- Radiology/imaging services
- Rehabilitation (inpatient rehabilitation outpatient therapy)
- Sleep lab
- Sports medicine
- Surgical services
- Vascular lab
- Women's services

158
beds

850
physicians

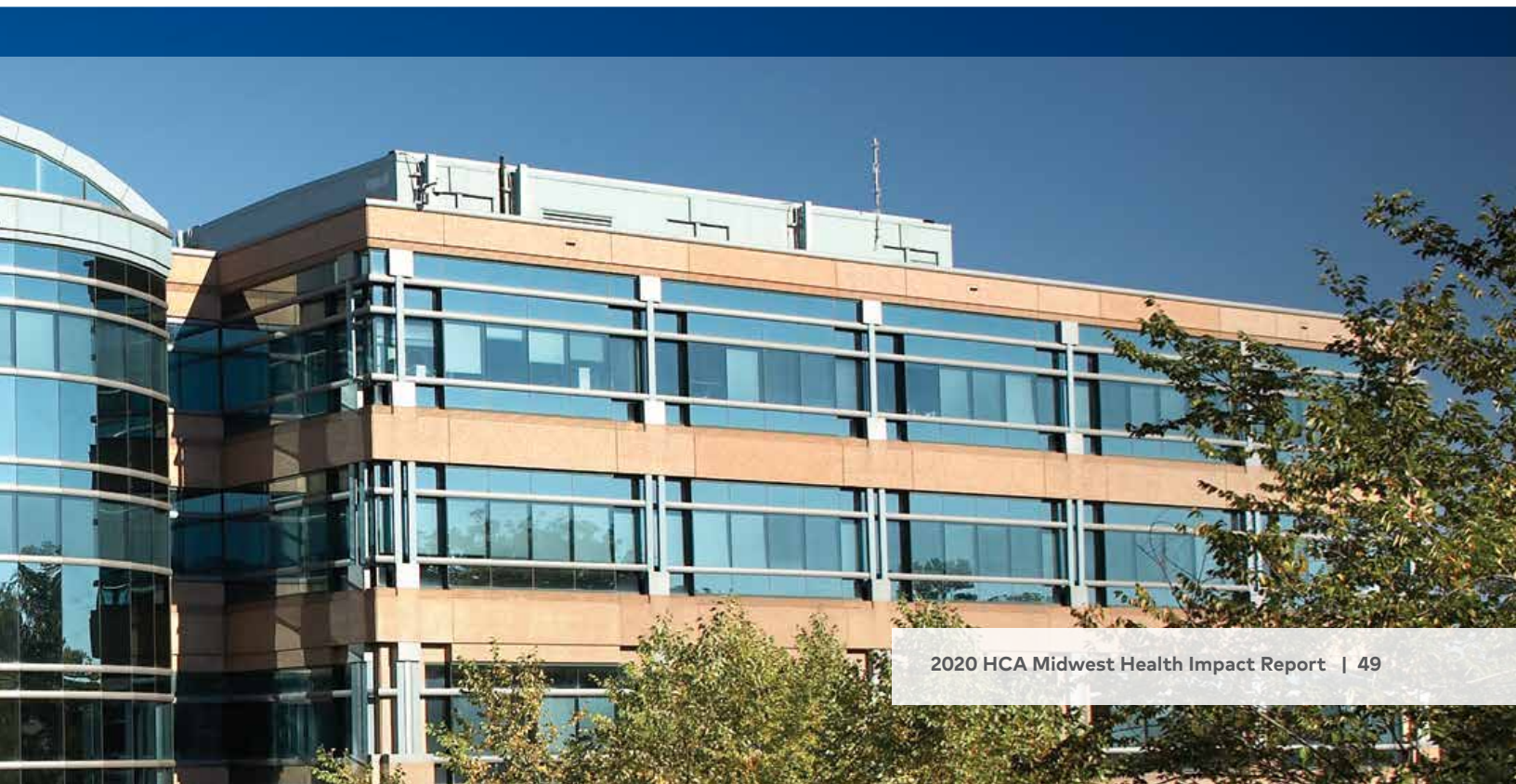
953
employees

62
volunteers



Accreditations, awards & certifications

- Aetna Institute of Quality®—Bariatric Surgery
- American Association of Cardiovascular and Pulmonary Rehabilitation—Certified Cardiac Rehabilitation Program
- American College of Emergency Physicians Bronze Level Accreditation—Geriatric Emergency Department
- American College of Radiology Gold Seal of Accreditation—MRI, Breast MRI
- American College of Surgeons Commission on Cancer—Integrated Network Accreditation
- American Diabetes Association—Diabetes Education Recognition
- American Heart Association Get With The Guidelines® Bronze Plus Award—Heart Failure
- American Heart Association Get With The Guidelines® Gold Plus Award—Stroke
- American Heart Association Get With The Guidelines® Honor Roll—Type 2 Diabetes
- Blue Distinction® Center—Bariatrics
- Blue Distinction® Center—Hip and Knee Replacement
- Blue Distinction® Center—Spine Care
- Intersocietal Accreditation Commission—Echocardiography Accreditation, Nuclear/PET Accreditation, Vascular Testing Accreditation
- Kansas Medical Society—Continuing Medical Education Program Accreditation
- Metabolic and Bariatric Surgery Accreditation and Quality Improvement Program—Bariatric Surgery Program Accreditation
- National Accreditation Program for Breast Centers—Breast Center Accreditation
- National Association of Epilepsy Centers—Level III Epilepsy Accreditation
- Society of Chest Pain Centers—Chest Pain Center Accreditation
- Surgical Review Corporation (SRC) Center of Excellence—Robotics & Colorectal Surgery
- The Joint Commission—Advanced Certification in Stroke (Primary Stroke Center)
- The Joint Commission—Chest Pain Certification
- The Joint Commission—Primary Stroke Certification
- The Joint Commission—Total Joints—Hip & Knee Certification





Overland Park Regional Medical Center

Overland Park, Kansas

oprmc.com

Overland Park Regional Medical is the premier area destination for women and children's healthcare services. We offer the region's only Maternal Fetal Health Center, to care for critically ill mothers and their baby under one roof. The hospital includes an antepartum unit, a labor and delivery unit, a Level III NICU and our Pediatric Center offers pediatric specialty care, a dedicated Pediatric ER and pediatric inpatient and intensive care unit. We also offer Johnson County's only Level II Trauma Center, the hospital is also an Accredited Stroke and Chest Pain Center. We offer four emergency rooms, including two freestanding ERs in Olathe and Shawnee.

Our services

- Arrhythmia care
- Blood bank
- Cancer care—Sarah Cannon Cancer Institute
- Cardiology/cardiovascular surgery
- Diabetes
- Emergency services
- Gastroenterology
- Intensive care unit (ICU)
- Laboratory
- Maternal Fetal Health Center
- Neonatal intensive care unit—level III
- Neurology/neurosurgery
- Orthopedics
- Pain management
- Pediatric ER
- Pediatric inpatient and intensive care unit
- Pediatric subspecialty care
- Pulmonary and respiratory services
- Radiology/imaging services
- Rehabilitation (occupational, physical, speech)
- Sleep disorders center
- Sports medicine
- Surgery
- Trauma center—level II
- Women's services



351

beds

662

physicians

1,315

employees

93

volunteers

Accreditations, awards & certifications

- AAGL—Center of Excellence in Minimally Invasive Gynecology
- American Academy of Sleep Medicine Sleep Medicine Accreditation
- American Association of Cardiovascular and Pulmonary Rehabilitation—Certified Cardiac Rehabilitation Program
- American College of Radiology Gold Seal of Accreditation—Ultrasound Accredited Facility
- American College of Radiology—Breast Imaging Center of Excellence
- American College of Surgeons—Verified Level II Trauma Center
- American College of Surgeons Commission on Cancer—Integrated Network Accreditation
- Blue Distinction® Center—Knee and Hip Replacement
- Blue Distinction® Center—Maternity Care
- College of American Pathologists Laboratory Accreditation Program—Laboratory Accreditation
- Kansas Medical Society—Continuing Medical Education Accreditation
- National Accreditation Program for Breast Centers—Breast Center Accreditation
- Society of Chest Pain Centers—Accredited Chest Pain Center
- The Joint Commission—Advanced Certification in Stroke (Primary Stroke Center)
- The Joint Commission's Gold Seal of Approval®—Hospital Accreditation
- The Leapfrog Group's Hospital Safety Score—A Grade in Patient Safety

Research Medical Center

Kansas City, Missouri

ResearchMedicalCenter.com

Research Medical Center is a regional destination for specialized, complex health care—including emergency room and trauma center, comprehensive stroke center, cardiovascular center, neuroscience institute, kidney and pancreas transplant institute, women’s services including obstetrics and gynecology, and orthopedics—across four Kansas City locations. Our campuses include the main campus on Meyer Boulevard, the Research Medical Center Brookside Campus on Rockhill Road and Research Psychiatric Center, a campus of Research Medical Center on 63rd Street. Research College of Nursing is also affiliated with Research Medical Center and HCA Midwest Health hospitals in the Kansas City and surrounding areas.

Our services

- Breast care
- Cancer care—Sarah Cannon Cancer Institute
- Cardiology/cardiovascular surgery
- Chemical dependency treatment
- Emergency services
- Gastroenterology
- Grossman Burn Center
- Intensive care unit (ICU)
- Laboratory
- Liver and Pancreas Institute
- Neonatal intensive care unit—level III
- Neurology/neurosurgery
- Orthopedics
- Pain management
- Pulmonary and respiratory services
- Radiology/imaging services
- Rehabilitation (inpatient rehabilitation outpatient therapy)
- Research College of Nursing
- Research Psychiatric Center
- Surgical services
- Trauma center—level I
- Women’s services





Accreditations, awards & certifications

- American College of Surgeons Commission on Cancer—Integrated Network Accreditation
- American Heart Association Get with the Guidelines® Gold Plus Honor Roll Elite Plus—Stroke
- American Heart Association Get With The Guidelines® Gold Plus—Heart Failure and Stroke
- American Heart Association Mission: Lifeline®—Silver Plus, STEMI
- American Nursing Credentials Center—Pathways to Excellence® Designated
- Blue Cross Blue Shield of Kansas City—Center of Distinction, Hip and Knee, Maternity, Cardiac Care
- HealthGrades—5-star Stroke Care Excellence Award
- HealthGrades—5 stars in Orthopedics, Neurosciences, Pulmonary, Vascular, Critical Care
- HealthGrades—Patient Safety Excellence Award
- Human Rights Campaign Foundation—Leader in LGBT Healthcare Equality
- Missouri Water Environmental Association—Gold Level
- National Cardiovascular Data Registry—Platinum Performance Achievement Award
- Research College of Nursing Named Top 5 Best Nursing Schools in Missouri
- State of Missouri Time Critical Diagnosis System—Level 1 Stroke Center
- The Joint Commission—Advanced Heart Failure Certification
- The Joint Commission—Chest Pain, Center of Distinction
- The Joint Commission—Hospital and Research Psychiatric Center Accreditation
- The Joint Commission's Top Performer on Key Quality Measures®
- The Leapfrog Group—Top Hospital Achievement
- The Leapfrog Group's Hospital Safety Score—A Grade in Patient Safety since 2014



Managed Facility

HCA Midwest Health has partnered with Cass Regional Medical Center through a management agreement to provide valuable services to the hospital, such as purchasing group membership, managed care contract negotiation and strategic planning services.



Cass Regional Medical Center

Harrisonville, Missouri

CassRegional.org

Cass Regional Medical Center is a county-owned critical access hospital located 30 miles south of Kansas City, Missouri. Accredited by The Joint Commission, the hospital offers a comprehensive array of services, including a Level III Trauma Center, a 10-bed geriatric-psychiatric unit, a 4-bed ICU, and 21 primary care and specialty clinics offered in nine Cass County locations, including Harrisonville, Pleasant Hill, Peculiar, Archie, Garden City and Kingsville.

35

beds

195

physicians

457

employees

67

volunteers



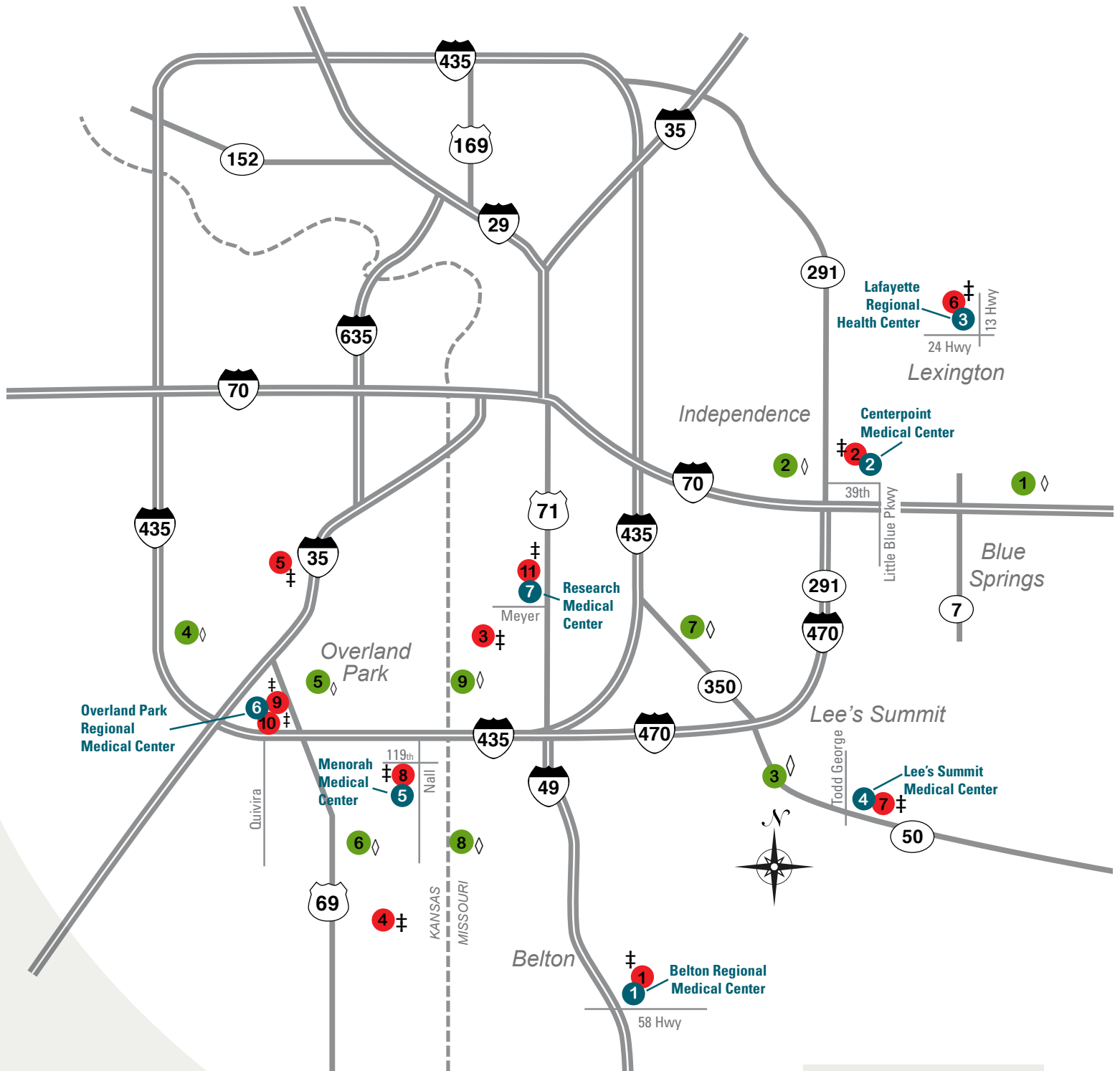
Our services

- Bariatric surgery
- Cardiology
- Ear, nose and throat
- Emergency services
- Endocrinology
- Gastroenterology
- Gynecology
- Laboratory services
- Medical imaging
- Nephrology
- Neurology
- New Vision™ Drug & Alcohol Medical Stabilization Service
- Oncology/hematology
- Orthopedics
- Pain management
- Podiatry
- Respiratory and pulmonary services
- Rehabilitation services
- Rheumatology
- Sage Senior Behavioral Health Unit (10 beds)
- Sleep medicine
- Surgical services
- Swing bed program
- Urology
- Wound care

Accreditations, awards & certifications

- Accreditation Commission for Health Care—Sleep Lab Accreditation
- American Association of Cardiovascular and Pulmonary Rehabilitation—Cardiac Rehab Accreditation
- American College of Radiology Gold Seal of Accreditation—Computerized Tomography Accredited Facility
- American College of Radiology Gold Seal of Accreditation—Mammography Accredited Facility
- American College of Radiology Gold Seal of Accreditation—MRI Accredited Facility
- American College of Radiology Gold Seal of Accreditation—Nuclear Medicine Accredited Facility
- American College of Radiology Gold Seal of Accreditation—Ultrasound Accredited Facility
- American College of Radiology Gold Seal of Accreditation—Vascular Ultrasound Accredited Facility
- American Diabetes Association—Diabetic Program Accreditation
- State of Missouri—Level III Trauma Center Certification
- The Joint Commission Gold Seal of Approval—Acute Stroke Ready Hospital Accreditation
- The Joint Commission Gold Seal of Approval—Hospital Accreditation
- The Joint Commission Gold Seal of Approval—Laboratory Accreditation

Kansas City Metropolitan



- HCA Midwest Hospitals
- ✝ • Emergency Facilities
- ◇ • Urgent Care Centers

► Hospitals

1. Belton Regional Medical Center
2. Centerpoint Medical Center
3. Lafayette Regional Health Center
4. Lee's Summit Medical Center
5. Menorah Medical Center
6. Overland Park Regional Medical Center
7. Research Medical Center

► Emergency Locations

1. Belton Regional Medical Center
2. Centerpoint Medical Center
3. ER of Brookside
4. ER of Olathe
5. ER of Shawnee
6. Lafayette Regional Health Center
7. Lee's Summit Medical Center
8. Menorah Medical Center
9. Overland Park Regional—Main ER
10. Overland Park Regional—Pediatric ER
11. Research Medical Center

► Urgent Care Centers

1. CareNow Blue Springs
2. CareNow Independence
3. CareNow Lee's Summit
4. CareNow Lenexa
5. CareNow Overland Park North
6. CareNow Overland Park South
7. CareNow Raytown
8. CareNow South Kansas City
9. CareNow State Line

► Physician Practices

Belton Surgical Affiliates
Bone & Joint Specialists Physician Group, LLC
Brookside Family Medical Group
Center for the Relief of Pain
Centerpoint Internal Medicine
Centerpoint Orthopedics
Centerpoint Physicians Group
College Park Family Care Center
Colorectal Surgical Associates
Family Care at Arbor Walk
Family Care of Eastern Jackson County
Family Care of Independence
Family Health Medical Group
Family Health Specialists of Lee's Summit
Goppert-Trinity Family Care

Grandview Health Care Clinic
Healthcare for Women Medical Group
Heritage Physicians Group
Higginsville Medical Clinic
Internal Medicine Associates of Kansas City
Jackson County Pulmonary Medical Group, LLC
Johnson County Neurology
Kansas City Gastroenterology & Hepatology Physicians Group
Kansas City Heart Rhythm Institute
Kansas City Internal Medicine
Kansas City Joint Replacement
Kansas City Neurology Associates
Kansas City Pulmonology Practice
Kansas City Spine and Sports Medicine Center
Kansas City Vascular & General Surgery
Kansas City Women's Clinic Group
Kansas Pulmonary & Sleep Specialists
Lee's Summit Family Care
Lexington Medical Clinic
Medical Group of Kansas City
Menorah Pulmonary and Critical Care Consultants
Midwest Breast Care
Midwest Endocrine Associates
Midwest Heart & Vascular Specialists
Midwest Infectious Disease Specialists
Midwest Maternal Fetal Medicine Physicians
Midwest Metropolitan Physicians Group
Midwest Neurology Physicians
Midwest Neuroscience Institute
Midwest Oncology Associates
Midwest Rheumatology Associates
Midwest Sports Medicine Physicians
Midwest Women's Healthcare Specialists
Neighborhood Walk-In and Family Care
Neurosurgery Associates of Jackson County
Neurosurgery of South Kansas City Medical Group
Odessa Medical Group
Ortho KC Medical Group: Parallel Parkway
Overland Park Endocrine and Diabetes Center
Overland Park Neurology & Sleep Medicine
Overland Park Surgical Specialists & Sports Medicine
Pediatric Surgical Specialists
Quivira Internal Medicine
Research Neurology Associates
Research Orthopedics and Reconstructive Specialists
Robine Medical Associates Of Kansas City
Southland Primary Care
Specialists in Women's Care
Statland Medical Group
The Surgical Medical Group of KC
Bariatric and Metabolic Specialists
Town Plaza Family Practice
Women's Center at Lee's Summit

