



2019 Impact Report





Contents

3	A Message From Our President
4	Where We Are
6	Who We Are
9	Economic Footprint
11	Workforce Development
12	Community Support
14	Our Hospitals

Throughout each of our 150+ Kansas City area locations, we are committed to our mission:

Above all else, we are committed to the care and improvement of human life.

A message from our president.



For HCA Midwest Health, 2018 was a momentous year. It was our 15th year serving the people of Kansas City and HCA Healthcare's 50th year as an organization. We achieved these milestones by staying true to our mission—***Above all else we are committed to the care and improvement of human life.***

I have seen our mission exemplified by the caregivers in our hospitals, physician practices, urgent care centers and ambulatory surgery centers. I want to thank our more than 9,000 colleagues for the role they play in providing superior, patient-centered care to every patient on every visit.

As the leading healthcare provider in the region, we care for more patients than anyone else, with over 600,000 patient encounters in 2018. That is over half a million lives that we had the honor and privilege of caring for, and improving.

Throughout 2018, we have continued to ensure exceptional patient care by investing in new technology, expanding our facilities, adding new locations and services, and recruiting top physician talent.

We grew our vascular services with the opening of four area vein clinics. And were the first Kansas City healthcare system to offer nitrous oxide as a low intervention method of pain relief for laboring mothers.

With the goal of creating a world-renowned heart rhythm program, we recruited top electrophysiology

talent and launched the Kansas City Heart Rhythm Institute (KCHRI). The program believes in advancing knowledge, continuous improvement and aims to shape the future of cardiac arrhythmia care.

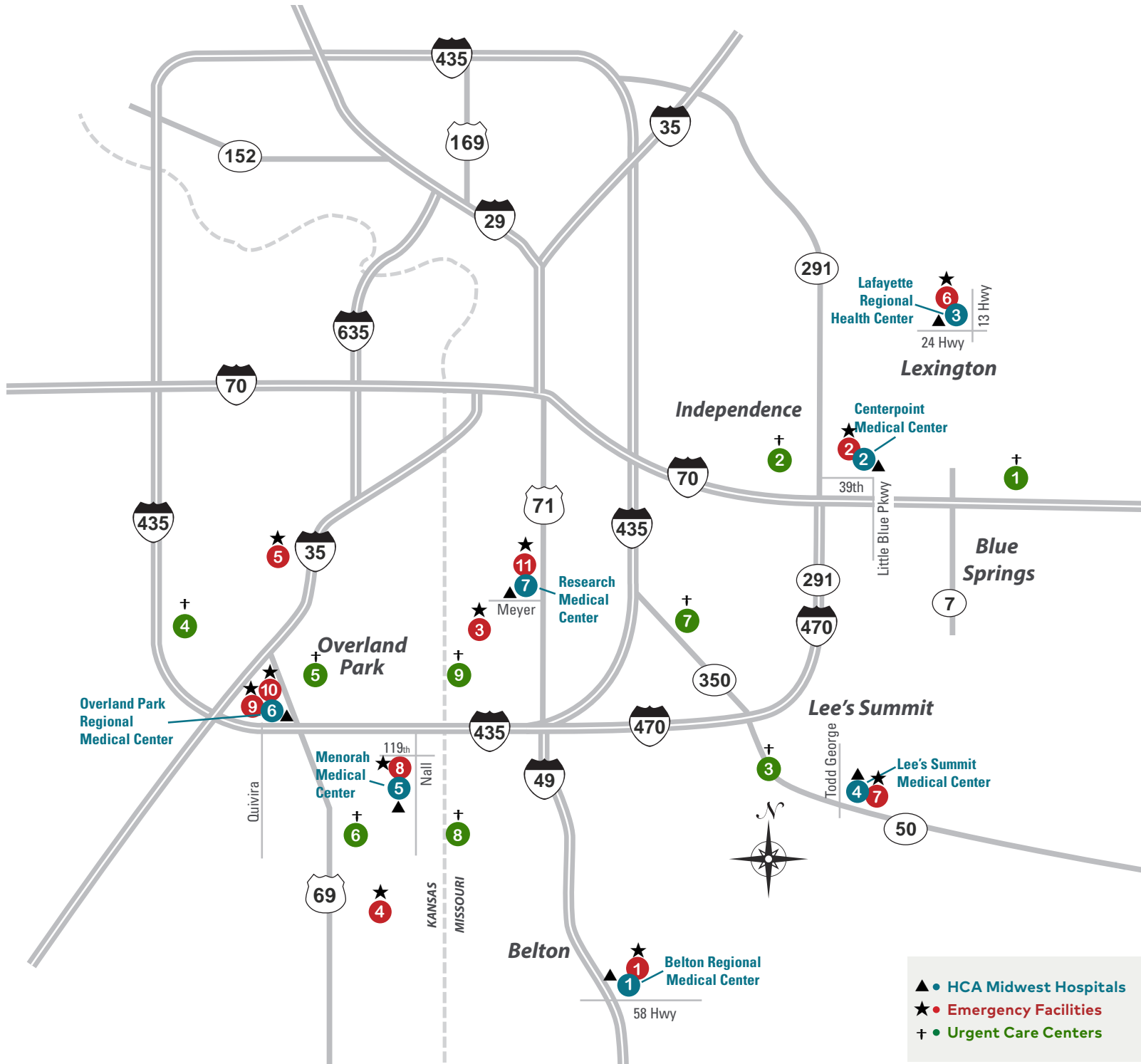
Menorah Medical Center achieved accreditation as a Center of Excellence in Colorectal Surgery and Robotic Surgery. And Belton Regional Medical Center received the Emergency Nurses Association's Lantern Award showcasing the emergency department's accomplishments in incorporating evidence-based practice and innovation into emergency care.

Overland Park Regional Medical Center brought a revolutionary new robotic-arm assisted orthopedic surgical approach to the area. This approach allows for unparalleled surgical accuracy and can result in a faster recovery.

Lee's Summit Medical Center opened its new state-of-the-art orthopedic and spine center, Lafayette Regional Health Center continued to expand its outpatient specialty care and Research Medical Center opened a new neuro intensive care unit.

Because of our efforts, the Kansas City region is a stronger, healthier community. At HCA Midwest Health we will always believe in—and commit to delivering—better care.

HCA Midwest Health



► Hospitals

1. Belton Regional Medical Center
2. Centerpoint Medical Center
3. Lafayette Regional Health Center
4. Lee's Summit Medical Center
5. Menorah Medical Center
6. Overland Park Regional Medical Center
7. Research Medical Center

► Emergency Locations

1. Belton Regional Medical Center
2. Centerpoint Medical Center
3. ER of Brookside
4. ER of Olathe
5. ER of Shawnee
6. Lafayette Regional Health Center
7. Lee's Summit Medical Center
8. Menorah Medical Center
9. Overland Park Regional - Main ER
10. Overland Park Regional - Pediatric ER
11. Research Medical Center

► Urgent Care Centers

1. CareNow Blue Springs
2. CareNow Independence
3. CareNow Lee's Summit
4. CareNow Lenexa
5. CareNow Overland Park North
6. CareNow Overland Park South
7. CareNow Raytown
8. CareNow South Kansas City
9. *CareNow State Line (Coming Soon)*

► Physician Practices

Belton Surgical Affiliates
Bone & Joint Specialists Physician Group, LLC
Brookside Family Medical Group
Center for the Relief of Pain
Centerpoint Internal Medicine
Centerpoint Orthopedics
Centerpoint Physicians Group
College Park Family Care Center
Colorectal Surgical Associates
Family Care at Arbor Walk
Family Care of Eastern Jackson County
Family Care of Independence
Family Health Medical Group
Family Health Specialists of Lee's Summit
Goppert-Trinity Family Care
Grandview Health Care Clinic
Healthcare for Women Medical Group
Heritage Physicians Group
Higginsville Medical Clinic
Internal Medicine Associates of Kansas City
Jackson County Pulmonary Medical Group, LLC
Johnson County Neurology
Kansas City Gastroenterology & Hepatology Physicians Group
Kansas City Heart Rhythm Institute
Kansas City Internal Medicine
Kansas City Joint Replacement
Kansas City Neurology Associates
Kansas City Pulmonology Practice
Kansas City Spine and Sports Medicine Center
Kansas City Vascular & General Surgery
Kansas City Women's Clinic Group
Kansas Pulmonary & Sleep Specialists
Lee's Summit Family Care

Lexington Medical Clinic
Medical Group of Kansas City
Menorah Pulmonary and Critical Care Consultants
Midwest Breast Care
Midwest Endocrine Associates
Midwest Heart & Vascular Specialists
Midwest Infectious Disease Specialists
Midwest Maternal Fetal Medicine Physicians
Midwest Metropolitan Physicians Group
Midwest Neurology Physicians
Midwest Neuroscience Institute
Midwest Oncology Associates
Midwest Rheumatology Associates
Midwest Sports Medicine Physicians
Midwest Women's Healthcare Specialists
Neighborhood Walk-In and Family Care
Neurosurgery Associates of Jackson County
Neurosurgery of South Kansas City Medical Group
Odessa Medical Group
Ortho KC Medical Group: Parallel Parkway
Overland Park Endocrine and Diabetes Center
Overland Park Neurology & Sleep Medicine
Overland Park Surgical Specialists & Sports Medicine
Pediatric Surgical Specialists
Quivira Internal Medicine
Research Neurology Associates
Research Orthopedics and Reconstructive Specialists
Robine Medical Associates Of Kansas City
Southland Primary Care
Specialists in Women's Care
Statland Medical Group
The Surgical Medical Group of KC
Bariatric and Metabolic Specialists
Town Plaza Family Practice
Women's Center at Lee's Summit



Dedicated to quality care.

Who We Are

HCA Midwest Health is Kansas City's leading healthcare provider, with an unwavering commitment to provide the community with high-quality, compassionate healthcare through some of the most advanced technology, programs and services available. With seven hospitals, the largest physician network and more convenient access points than any other healthcare system in the area—including emergency rooms, outpatient centers, physician practices, urgent cares and surgery centers—HCA Midwest Health is focused on delivering exceptional healthcare services across the spectrum. Outreach sites are also located throughout the region, offering residents access to physicians, services and a wealth of other healthcare resources all within their own communities.

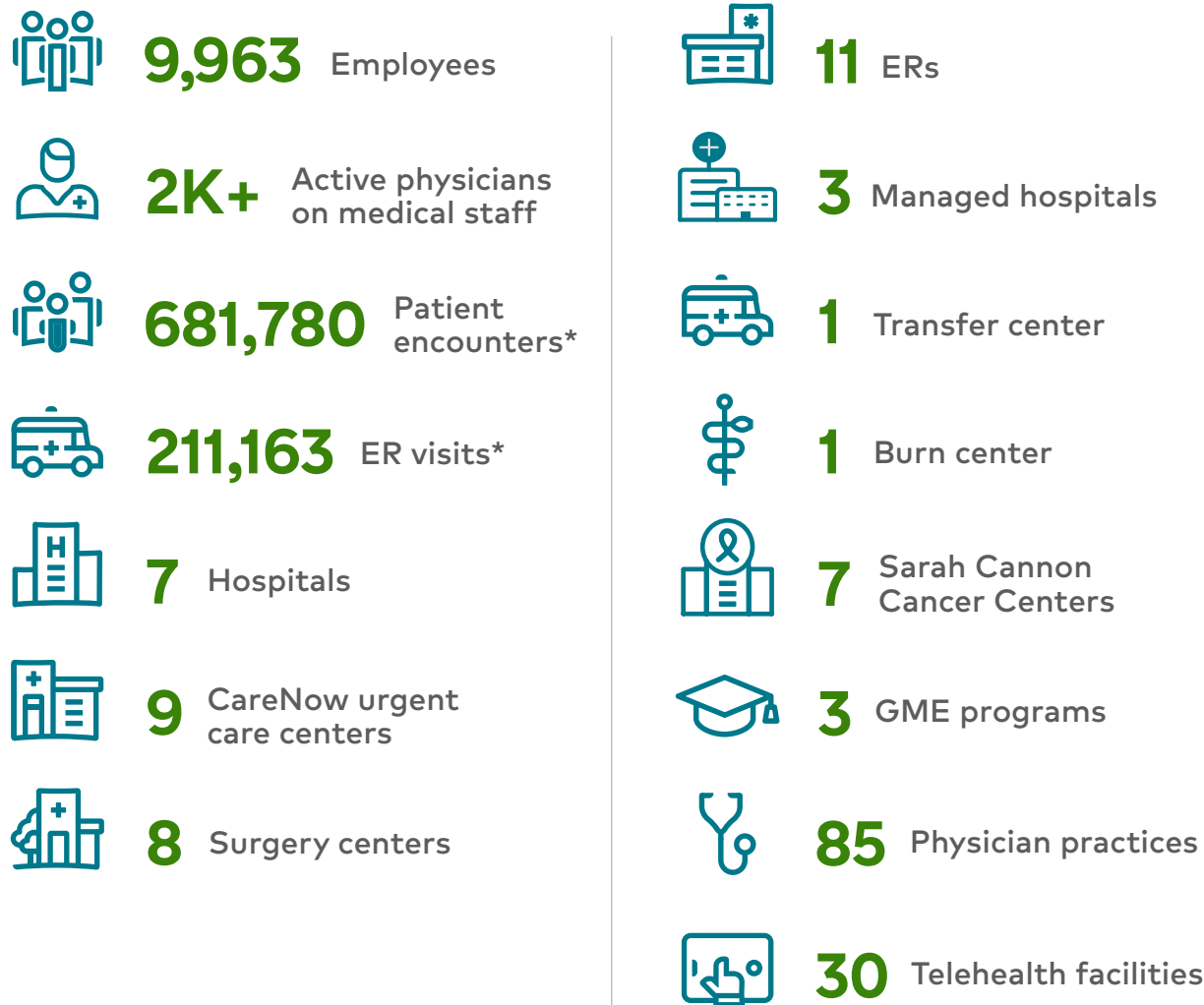
The physicians, specialists and support staff who comprise the HCA Midwest team are devoted to improving healthcare in Greater Kansas City and the outlying areas with innovative, cost-effective care. To ensure the community's needs are served, HCA Midwest invests in cutting-edge technology and continually expands facilities and services; partners with numerous local charitable and civic organizations to provide leadership, volunteers and funding. As one of Kansas City's largest private sector employers, HCA Midwest Health is dedicated to the community's growth, success and well-being.

About HCA Healthcare

HCA Midwest Health is part of HCA Healthcare. By the numbers, HCA Healthcare is the largest private employer of healthcare in the United States. One out of every 18 emergency room visits occurs at an HCA Healthcare-affiliated facility, and our hospitals welcome to the world about one out of every 17 babies born in the U.S. These numbers are big, and they are important to understanding HCA Healthcare. But, for HCA Healthcare, size is not an end, but a means. What's more important is how we harness our knowledge and resources in pursuit of our mission.

Ultimately, HCA Healthcare is a leader because we have excellent caregivers who bring vast clinical experience to serve patients. Nothing matters more to our diverse and talented colleagues than giving people the absolute best healthcare possible. Every day, we seek to raise the bar higher, not just for ourselves, but for healthcare everywhere.

HCA Midwest Health by the numbers



*2018 data



We believe in taking care of others while being there for each other.

The colleagues that work throughout our system also live in the same communities as our patients. We want the same things that our communities want — **healthier communities that lead to healthier tomorrows.**



Economic footprint

HCA Midwest Health's operations makes us a significant contributor to our local economy.

\$791 million

total annual payroll and benefits for the 9,963 employees

\$115 million

in state and local taxes paid

\$99.4 million

total capital investment in 2018 which resulted in an additional \$67.5 million in economic impact and an estimated 434 additional jobs

\$3.2 billion

total annual economic impact (direct, indirect, and induced) of the system's operations, which also supported 18,789 regional jobs



**We believe excellent
people make
excellence happen.**

“Bricks and mortar do
not make a hospital.
People do.”

Dr. Thomas Frist, Sr.



Workforce development

In order to take care of others, we believe strongly that we must also be there for each other.

Beginning in 2018, HCA Healthcare is investing up to \$300 million over three years toward programs that support our colleagues' career development, their families and their lives. This includes:

- A new paid family leave benefit that provides up to 80 hours per year of paid time away from work to bond with a new child or help provide care for an eligible dependent with a serious health condition.
- In August 2018, for higher education support, we harmonized our tuition reimbursement policy. Most full- and part-time employees are eligible for up to \$5,250 per year to take courses from an accredited education provider.
- Beginning January 1, 2019, eligible employees will receive a new monthly benefit to help them pay off student loan debt.
- A new workforce certification program will offer reimbursement of the test fee and potential one-time bonus for eligible employees who earn certification in specific areas.
- We are also finalizing a scholarship program for children and stepchildren of employees through an application process.
- In 2018, the HCA Foundation established the HCA Healthcare Scholars program to offer merit-based scholarships of up to \$5,000 to children of full- and part-time HCA Healthcare affiliated employees.
- Research College of Nursing provides an HCA tuition discount, a scholarship, and a loan forgiveness program for students who agree to work within the system.

The statement by HCA Healthcare co-founder Dr. Thomas Frist, Sr. has been the guiding principle of HCA Healthcare's ability to attract and retain the best and brightest in healthcare. Our diverse and talented colleagues are bound together by our purpose: to create healthier tomorrows for every patient we serve—and for each other as well. Our colleagues' skill and sense of purpose drive our commitment to delivering excellence through effective, evidence-based, innovative and patient-centered care.

HCA Midwest Health's 9,963 employees make us the **area's second largest private sector employer** and largest healthcare employer in Kansas City. These incredible healthcare professionals **care for 1 in 4 of every patient** in Kansas City, making us the largest healthcare provider in the region.

Giving is not about making a donation. It is about making a difference.

We deeply believe in helping those in need. Together, through financial support, volunteerism, education and activism, we can make a meaningful difference in the diverse communities in which we serve.

- In 2018, we provided nearly \$1 million dollars in charitable contributions across our region.
- We support each other through the HCA Hope Fund, established in 2005 so that colleagues could provide support to fellow colleagues impacted by natural disaster, illness, injury, domestic violence, the death of a loved one or any number of unavoidable hardships.
- In 2018, we provided \$108 million in charity care, uninsured discounts and other uncompensated care.

Community support

A small selection of the non-profit organizations supported:



- American Heart Association
- Giving the Basics
- Art Bra KC
- March of Dimes
- Leukemia & Lymphoma Society
- Making Strides Against Breast Cancer
- Rose Brooks Center
- Pancreatic Cancer Action Network
- Gilda's Club
- Komen Greater Kansas City
- Jewish Community Center
- American Cancer Society
- Head for the Cure
- Kansas City Care Clinic
- Cancer Action
- Cristo Rey
- Wonderscope Children's Museum
- Charlie's House
- Deanna Rose Farmstead
- The Research Foundation
- Circle of Hope NICU Foundation
- Jewish Family Services
- Brain Injury Association
- Colon Cancer Coalition
- Crohn's and Colitis Foundation
- Kansas City Zoo
- Kansas City Urban Youth



Our hospitals.

Belton Regional Medical Center

17065 S 71 Highway, Belton, MO 64012 • (816) 348-1200 • BeltonRegionalMedicalCenter.com

Accreditations, awards and certifications

- State of Missouri – TCD Level III Trauma Center
- State of Missouri – TCD Level III Stroke Center
- 2018 American Heart Association/American Stroke Association Get with the Guidelines Gold Plus-Elite Award
- The Emergency Nurses Association 2018 Lantern Award
- 2018 Healthgrades – Patient Safety Excellence Award
- Pathway Designated by the American Nurses Credentialing Center
- The Joint Commission – Acute Stroke Ready Hospital
- The Joint Commission – Certification in Joint Replacement for Hips and Knees
- The Joint Commission Gold Seal of Approval® – Hospital Accreditation
- The College of Surgeons Commission on Cancer Accreditation – Cancer Accredited Program
- American College of Radiology Gold Seal Accredited Facility for Computed Tomography, Mammography, MRI, Nuclear Medicine and Ultrasound

Our services

- Cancer care – Sarah Cannon Cancer Institute
- Cardiology
- Emergency services
- Intensive care unit (ICU)
- Laboratory
- PACU
- Radiology/imaging services
- Rehabilitation (occupational, physical, speech therapy)
- Respiratory therapy
- Sleep lab
- Specialty clinics
- Sports medicine
- Surgical services



71 Beds



320 Physicians

337 Employees

35 Volunteers

Since 1984, our mission has been to provide the citizens of southern Jackson and northern Cass counties access to important health resources. To meet the growing medical needs of our community, we underwent a \$39.2 million dollar renovation. Today, we offer a full range of inpatient and outpatient services, supported by our excellent staff, advanced technology, and deep relationships within our community.

Centerpoint Medical Center

19600 E 39th Street, Independence, MO 64057 • (816) 698-7000 • CenterpointMedical.com

Accreditations, awards and certifications

- 2018 ACTION Registry® – GWTG™ Platinum Performance Achievement Award
- American Academy of Sleep Medicine – Accredited Sleep Medicine Member Center
- American Association of Cardiovascular and Pulmonary Rehabilitation – Certified Cardiac Rehabilitation Program
- American College of Radiology Gold Seal of Accreditation – Ultrasound Accredited Facility
- American College of Surgeons' Commission on Cancer Program – Cancer Program Accreditation
- American College of Surgeons National Accreditation Program for Breast Centers – Breast Center Accreditation
- American Heart Association 2018 Get With The Guidelines® Gold Plus Honor Roll – Heart Failure
- American Heart Association 2018 Get With The Guidelines® Gold Plus Honor Roll Elite – Stroke
- American Nurses Credentialing Center – Pathway Designated
- Blue Distinction® Center – Knee and Hip Replacement
- College of American Pathologists Laboratory Accreditation Program – Laboratory Accreditation
- Commission on Cancer Accreditation
- MBSAQIP Bariatric Surgery Program Accreditation
- Society of Cardiovascular Patient Care – Chest Pain Center Accreditation with PCI
- The Joint Commission Advanced Certification – Heart Failure
- The Joint Commission Advanced Certification – Stroke (Primary Stroke Center)
- The Joint Commission Gold Seal of Approval® – Hospital Accreditation
- The Leapfrog Group's Hospital Safety Score – "A" Grade in Patient Safety

Our services

- Cancer care – Sarah Cannon Cancer Institute
- Cardiology/cardiovascular surgery
- Emergency services
- Gastroenterology
- Neonatal intensive care unit – level III
- Neurology/neurosurgery
- Orthopedics
- Pain management
- Radiology/imaging services
- Rehabilitation (inpatient and outpatient)
- Sports medicine
- Sleep disorders center
- Surgery
- Trauma center – level II
- Women's center
- Wound care



285 Beds



447 Physicians

1,481 Employees

215 Volunteers

Centerpoint Medical Center is dedicated to providing compassionate care and the best possible customer service to our patients and their families. We constantly invest in state-of-the-art equipment and technology to offer some of the latest clinical services to our patients. We also provide numerous features for visitors, including sleeper chairs in patient rooms, comfortable waiting areas, wireless internet access throughout the facility and more.

Lafayette Regional Health Center

1500 State Street, Lexington, MO 64067 • (660) 259-2203 • LRHC.com

(Critical Access Hospital)

Accreditations, awards and certifications

- American College of Radiology Gold Seal of Accreditation – Computed Tomography Accredited Facility
- American College of Radiology Gold Seal of Accreditation – Mammography Accredited Facility
- American College of Radiology Gold Seal of Accreditation – MRI Accredited Facility
- American College of Radiology Gold Seal of Accreditation – Ultrasound
- College of American Pathologists – Laboratory Accreditation
- American College of Surgeons Commission on Cancer Accreditation
- The Joint Commission Gold Seal of Approval – Hospital Accreditation
- The Joint Commission Top Performer on Key Quality Measures® – 2014 recognition
- Women’s Choice Award – Emergency Care Award – 2014-2018

Our services

- Cancer care – Sarah Cannon Cancer Institute
- Emergency services
- Intensive care unit (ICU)
- Laboratory services
- Medical-surgical nursing
- Pulmonary and respiratory services
- Radiology/imaging services
- Rehabilitation
- Sleep medicine
- Specialty clinics
- Surgical services
- Swing bed or skilled recovery



25 Beds



201 Physicians

236 Employees

20 Volunteers

Lafayette Regional Health Center is a critical access hospital, accredited by The Joint Commission, located in historic Lexington, Missouri, 50 miles east of Kansas City. This primary care hospital offers a comprehensive array of services in a small- town environment. Patients enjoy the comfort of knowing they’re receiving quality healthcare in their hometown. Lafayette Regional Health Center also owns and operates three physician clinics throughout Lafayette County.

Lee's Summit Medical Center

2100 SE Blue Parkway, Lee's Summit, MO 64063 • (816) 282-5000 • LeesSummitMedicalCenter.com

Accreditations, awards and certifications

- American Academy of Sleep Medicine Accreditation
- American Association of Cardiovascular and Pulmonary Rehabilitation – Certified Cardiac Rehabilitation Program
- American College of Radiology Gold Seal of Accreditation – Computed Tomography, Mammography, MRI, Nuclear Medicine, Ultrasound
- American College of Surgeons Commission on Cancer Accreditation
- American Heart Association/American Stroke Association Get with The Guidelines® Gold Plus Honor Roll Elite – Stroke Achievement
- American Nurses Credentialing Center Pathways Designated Hospital
- American Heart Association – Target Stroke Honor Roll
- College of American Pathologists – Accredited Laboratory Program
- Healthgrades Patient Safety Excellence Award – 2018
- Kansas City Business Journal 100 Best Places to Work in Kansas City – 2018 recognition
- Leapfrog Group Hospital Safety – Grade A Five Consecutive Terms
- Modern Healthcare 100 Best Places to Work in Healthcare – 2014, 2017 & 2018 recognition
- Missouri Time Critical Diagnosis System – Level II STEMI Designated Hospital
- Missouri Time Critical Diagnosis System – Level II Stroke Designated Hospital
- The Joint Commission – Advanced Certification in Stroke (Primary Stroke Center)
- The Joint Commission – Chest Pain Certification
- The Joint Commission – Core Accreditation for Total Hip and Total Knee Replacement
- The Joint Commission's Gold Seal of Approval® – Hospital Accreditation

Our services

- Bariatric surgery program
- Bronchoscopy
- Cancer care – Sarah Cannon Cancer Institute
- Cardiology/cardiovascular surgery
- Endoscopy services
- Cystoscopy
- Emergency services
- Orthopedics
- Imaging services
- Neurology
- Pain management
- Palliative care
- Physical, speech and occupational therapy
- Sports medicine
- Radiology/imaging services
- Respiratory and pulmonary services
- Sleep disorders center
- Surgical services
- Women's services
- Wound care center



80 Beds



193 Physicians

514 Employees

60 Volunteers

Lee's Summit Medical Center is a full-service hospital serving Lee's Summit and surrounding areas. All services are supported by a medical staff of nearly 200 physicians who represent more than 40 specialties. Lee's Summit Medical Center has more than 500 highly trained staff members and 60 volunteers.

Menorah Medical Center

5721 W 119th Street, Overland Park, KS 66209 • (913) 498-6000 • MenorahMedicalCenter.com

Accreditations, awards and certifications

- 2016 ACTION Registry® – GWTG™ Platinum Performance Achievement Award for Cardiology Care
- Aetna Institute of Quality® – Bariatric Surgery (2015)
- American Association of Cardiovascular and Pulmonary Rehabilitation – Certified Cardiac Rehabilitation Program
- American College of Emergency Physicians Bronze Level Accreditation – Geriatric Emergency Department
- American College of Radiology Gold Seal of Accreditation – MRI, Breast MRI
- American Diabetes Association – Diabetes Education Recognition
- American Heart Association 2016 Get With The Guidelines® Gold Plus – Heart Failure
- American Heart Association 2018 Get With The Guidelines Gold Plus – Stroke
- Blue Distinction® Center – Knee and Hip Replacement
- Intersocietal Accreditation Commission – Echocardiography Accreditation, Nuclear/PET Accreditation, Vascular Testing Accreditation
- Kansas Medical Society – Continuing Medical Education Program Accreditation
- Metabolic and Bariatric Surgery Accreditation and Quality Improvement Program – Bariatric Surgery Program Accreditation
- National Accreditation Program for Breast Centers – Breast Center Accreditation
- National Association of Epilepsy Centers – Level III Epilepsy Accreditation
- Society of Chest Pain Centers – Chest Pain Center Accreditation
- Surgical Review Corporation (SRC) Center of Excellence – Robotics & Colorectal Surgery
- The Commission on Cancer Accreditation – Cancer Program Accreditation
- The Joint Commission – Advanced Certification in Stroke (Primary Stroke Center)
- The Joint Commission Certified for Orthopedic Hip and Knee Replacement
- The Joint Commission's Gold Seal of Approval® – Hospital Accreditation

Our services

- Bariatric and metabolic program
- Breast center
- Cancer care – Sarah Cannon Cancer Institute
- Cardiology/cardiovascular surgery
- Diabetes education
- Emergency services
- Gastroenterology
- Intensive care unit (ICU)
- Laboratory
- Neonatal intensive care unit – level II
- Neurology/neurosurgery
- Orthopedics
- Pediatric neurology
- Pulmonary/respiratory services
- Radiology/imaging services
- Rehabilitation (inpatient rehabilitation outpatient therapy)
- Sleep lab
- Sports medicine
- Surgical services
- Vascular lab
- Women's services



158 Beds



822 Physicians

981 Employees

80 Volunteers

Menorah Medical Center is a full-service, acute care hospital and ER serving the communities of Overland Park and Leawood. We focus on providing compassionate care and some of the most advanced treatment options available in the Kansas City region. Menorah's world-class medical staff offers exceptional experiences and extraordinary medicine for adults, newborns, teens, and children.

Overland Park Regional Medical Center

10500 Quivira Road, Overland Park, KS 66215 • (913) 541-5000 • OPRMC.com

Accreditations, awards and certifications

- AAGL – Center of Excellence in Minimally Invasive Gynecology
- American Academy of Sleep Medicine Sleep Medicine Accreditation
- American Association of Cardiovascular and Pulmonary Rehabilitation – Certified Cardiac Rehabilitation Program
- American Heart Association 2017 Get With The Guidelines® Stroke – Gold Plus Honor Roll Elite
- American Heart Association 2017 Mission: Lifeline® – Gold Receiving
- American College of Radiology – Breast Imaging Center of Excellence
- American College of Radiology Gold Seal of Accreditation – Ultrasound Accredited Facility
- American College of Surgeons – Verified Level II Trauma Center
- Blue Distinction® Center – Knee and Hip Replacement
- Blue Distinction® Center – Maternity Care
- College of American Pathologists Laboratory Accreditation Program – Laboratory Accreditation
- Commission on Cancer Accreditation
- Kansas Medical Society – Continuing Medical Education Accreditation
- National Accreditation Program for Breast Centers – Breast Center Accreditation
- Society of Chest Pain Centers – Accredited Chest Pain Center
- The Joint Commission – Advanced Certification in Stroke (Primary Stroke Center)
- The Joint Commission’s Gold Seal of Approval® – Hospital Accreditation

Our services

- Blood bank
- Cancer care – Sarah Cannon Cancer Institute
- Cardiology/cardiovascular surgery
- Diabetes
- Emergency services
- Gastroenterology
- Intensive care unit (ICU)
- Laboratory
- Maternal-fetal health center
- Neonatal intensive care unit – level III
- Neurology/neurosurgery
- Orthopedics
- Pain management
- Pediatric ER
- Pediatric inpatient and intensive care unit
- Pediatric subspecialty care
- Pulmonary and respiratory services
- Radiology/imaging services
- Rehabilitation (occupational, physical, speech)
- Sleep disorders center
- Sports medicine
- Surgery
- Trauma center – level II
- Women’s services



351 Beds



629 Physicians

1,322 Employees

104 Volunteers

Since its founding in 1978, Overland Park Regional Medical Center has grown to reflect the changing needs of the community it serves. Located at I-435 and Quivira Road in Overland Park, Kansas, this acute care hospital offers the only nationally accredited Level II Trauma Center, Level III Neonatal Intensive Care Unit, and only Pediatric Intensive Care Unit in Johnson County.

Research Medical Center

2316 E Meyer Blvd, Kansas City, MO 64132 • (816) 276-4000 • ResearchMedicalCenter.com

Accreditations, awards and certifications

- American Association of Colleges of Nursing – Exemplary Academic Practice Partnership Award Honoree
- American College of Radiology – Breast Imaging Center of Excellence Award
- American College of Surgeons Commission on Cancer Accreditation
- American Heart Association Get With The Guidelines® Gold Plus Honor Roll – Stroke and Heart Failure
- American Heart Association Mission: Lifeline® – Bronze Award
- American Heart Association Get With The Guidelines® Gold Plus and Target Stroke Honor Roll Elite – Stroke
- American Nursing Credentials Center – Pathway to Excellence Designated
- Healthgrades – Five Stars
- Human Rights Campaign Foundation – Leader in LGBT Healthcare Equality
- March of Dimes – Low C-section rate and low pre-term birth rate recognition
- Midwest Transplant Network – Excellence in Donation for Organ and Tissue Conversion
- State of Missouri – TCD Level I Stroke, Trauma, STEMI and Sepsis
- The Joint Commission – Heart Failure Certification
- The Joint Commission’s Top Performer on Key Quality Measures®
- The Leapfrog Group – Top Hospital Achievement
- The Leapfrog Group’s Hospital Safety Score – A Grade in Patient Safety – four consecutive years
- UDS – Top Performer Award 2014, 2015, 2016, 2017

Our services

- Breast care
- Cancer care – Sarah Cannon Cancer Institute
- Cardiology/cardiovascular surgery
- Chemical dependency treatment
- Emergency services
- Gastroenterology
- Grossman Burn Center
- Intensive care unit (ICU)
- Laboratory
- Liver and Pancreas Institute
- Neonatal intensive care unit – level III
- Neurology/neurosurgery
- Orthopedics
- Pain management
- Pulmonary and respiratory services
- Radiology/imaging services
- Rehabilitation (inpatient rehabilitation outpatient therapy)
- Research College of Nursing
- Research Psychiatric Center
- Surgical services
- Trauma center – level I
- Women’s services



590 Beds



417 Physicians

2,460 Employees

96 Volunteers



Research Medical Center is a regional destination for specialized, complex health care—including emergency room and trauma center, comprehensive stroke center, cardiovascular center, neuroscience institute, kidney and pancreas transplant institute, women’s services including obstetrics and gynecology, and orthopedics—across four Kansas City locations. Our campuses include the main campus on Meyer Boulevard, the Research Medical Center Brookside Campus on Rockhill Road and Research Psychiatric Center, a campus of Research Medical Center on 63rd Street. Research College of Nursing is also affiliated with Research Medical Center and HCA Midwest Health hospitals in the Kansas City and surrounding areas.



Managed hospitals.





Allen County Memorial Hospital (Critical Access Hospital)

	25	Beds
	74	Physicians
	168	Employees
	60	Volunteers





Cass Regional Medical Center (Critical Access Hospital)

	35	Beds
	30	Physicians
	466	Employees
	50	Volunteers



Carroll County Memorial Hospital (Critical Access Hospital)

	25	Beds
	80	Physicians
	241	Employees
	21	Volunteers

